

TRAINEE SURVEY 2017

Dr Abhishek Joshi **BJCA Secretary**
Dr Jubin Joseph **BJCA President**



Conflicts of Interest: None

BACKGROUND & AIMS

- Thirteen years of surveys
- Designed by trainees
- Measures trends in training *and* opinions of trainees
- Open to all doctors at registrar level
 - NTN & non-NTN holders
 - OOP trainees



FOCUS FOR 2017

- Training Environment
 - Rota Gaps
 - Access to Advanced Modular Training
 - Acute General Medicine
 - Working Culture
- Echocardiography Curriculum 2016



DEMOGRAPHICS

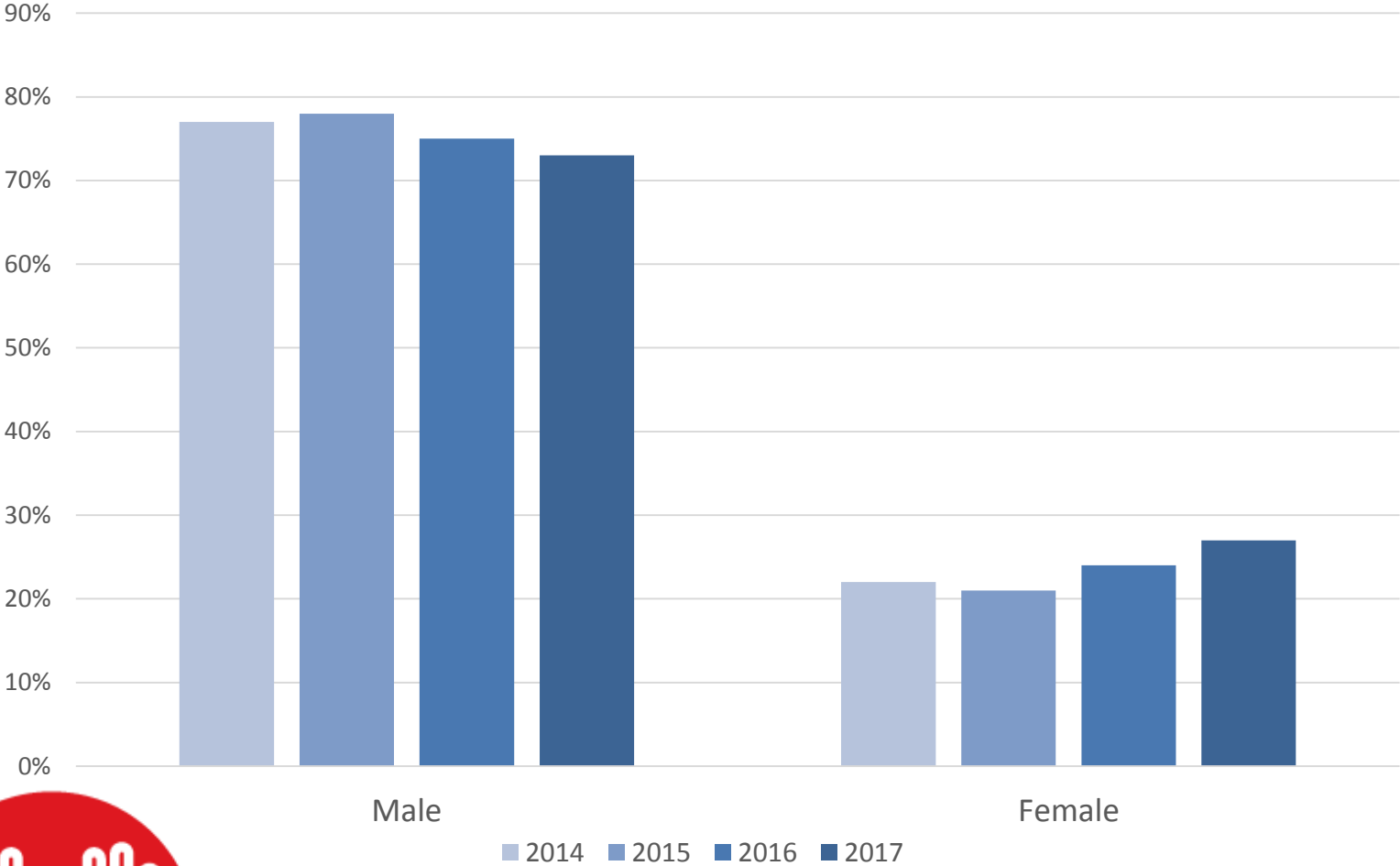


DEMOGRAPHICS

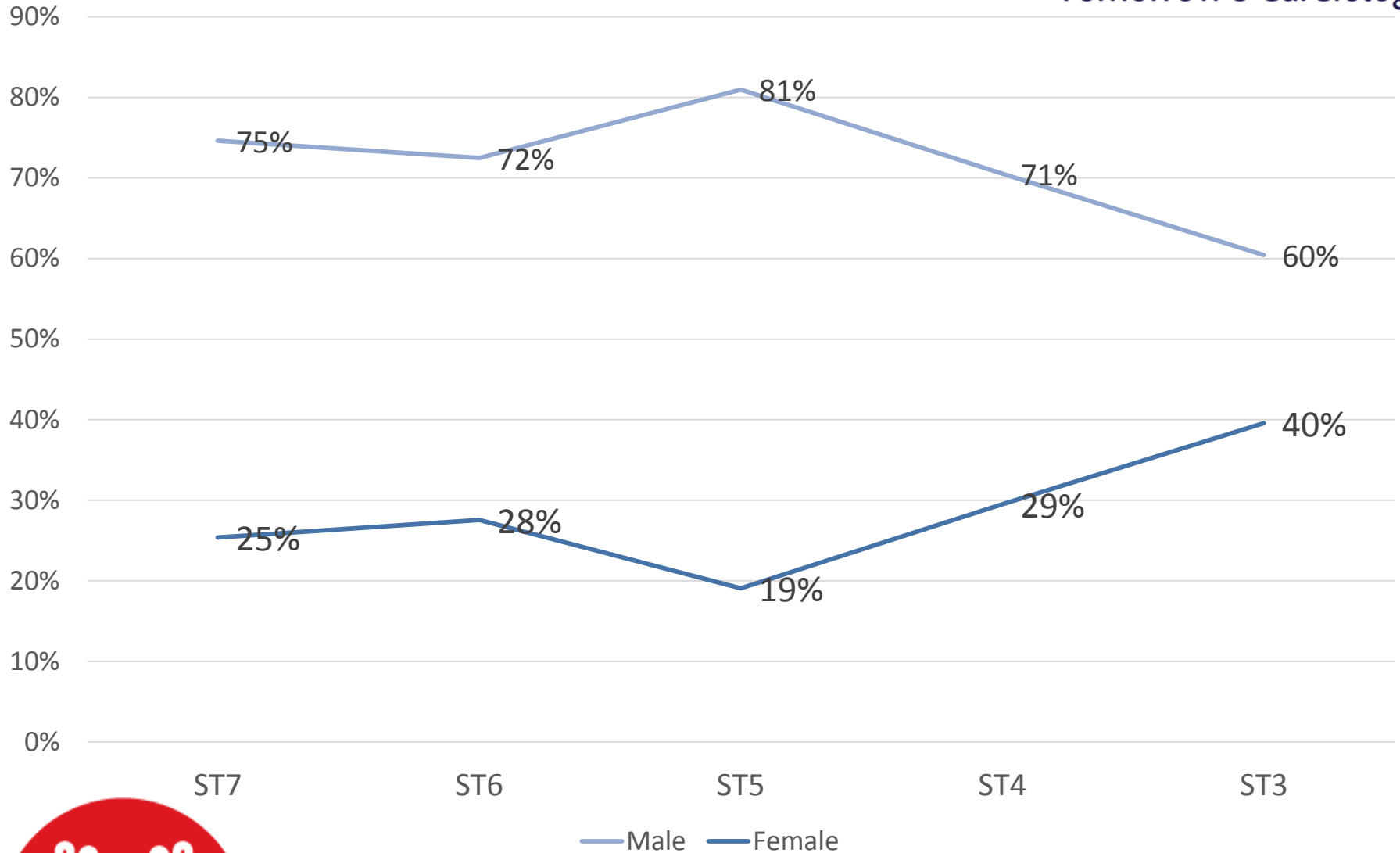
497



GENDER: ALL NTNs

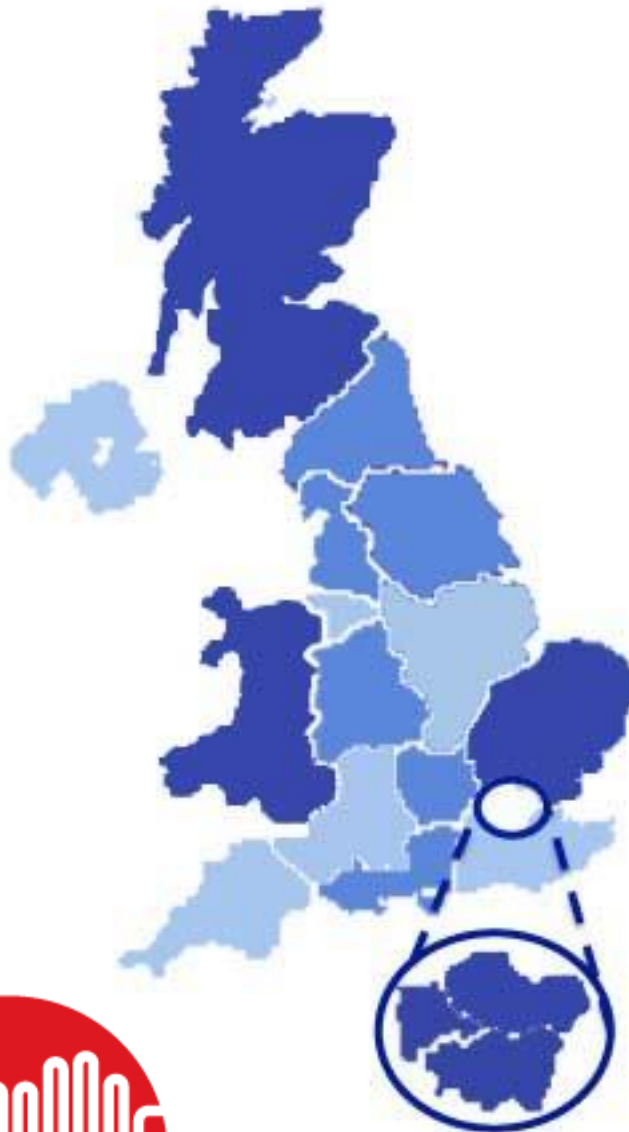


GENDER: ALL NTNs



— Male — Female

REGIONAL RESPONSES



Region	Responses	% of Total
East Midlands	37	9%
NE Thames	32	8%
East of England	31	7%
Wales	31	7%
North Western	30	7%
Scotland	28	7%
S Thames	28	7%
Yorkshire & Humber	27	6%
West Midlands	26	6%
Oxford	24	6%
NW Thames	24	6%
Northern	20	5%
Mersey	15	4%
Wessex	15	4%
KSS	15	4%
SW Peninsula	14	3%
Severn	13	3%
Northern Ireland	12	3%



REGIONAL RESPONSES



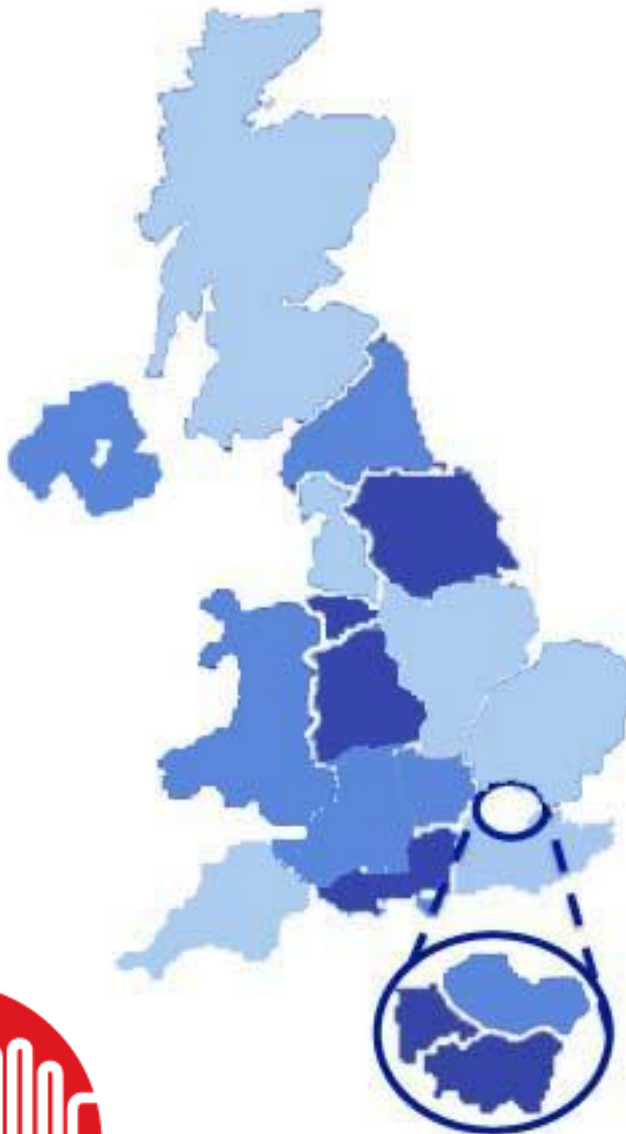
Region	Responses	Turnout
SW Peninsula	14	82%
East of England	31	67%
East Midlands	37	56%
North Western	30	55%
Wales	31	52%
Oxford	24	50%
Mersey	15	50%
Severn	13	48%
Northern Ireland	12	37%
Scotland	28	36%
West Midlands	26	35%
Wessex	15	34%
S Thames	28	33%
Northern	20	33%
NE Thames	32	32%
KSS	15	32%
Yorkshire & Humber	27	30%
NW Thames	24	16%



TRAINING QUALITY



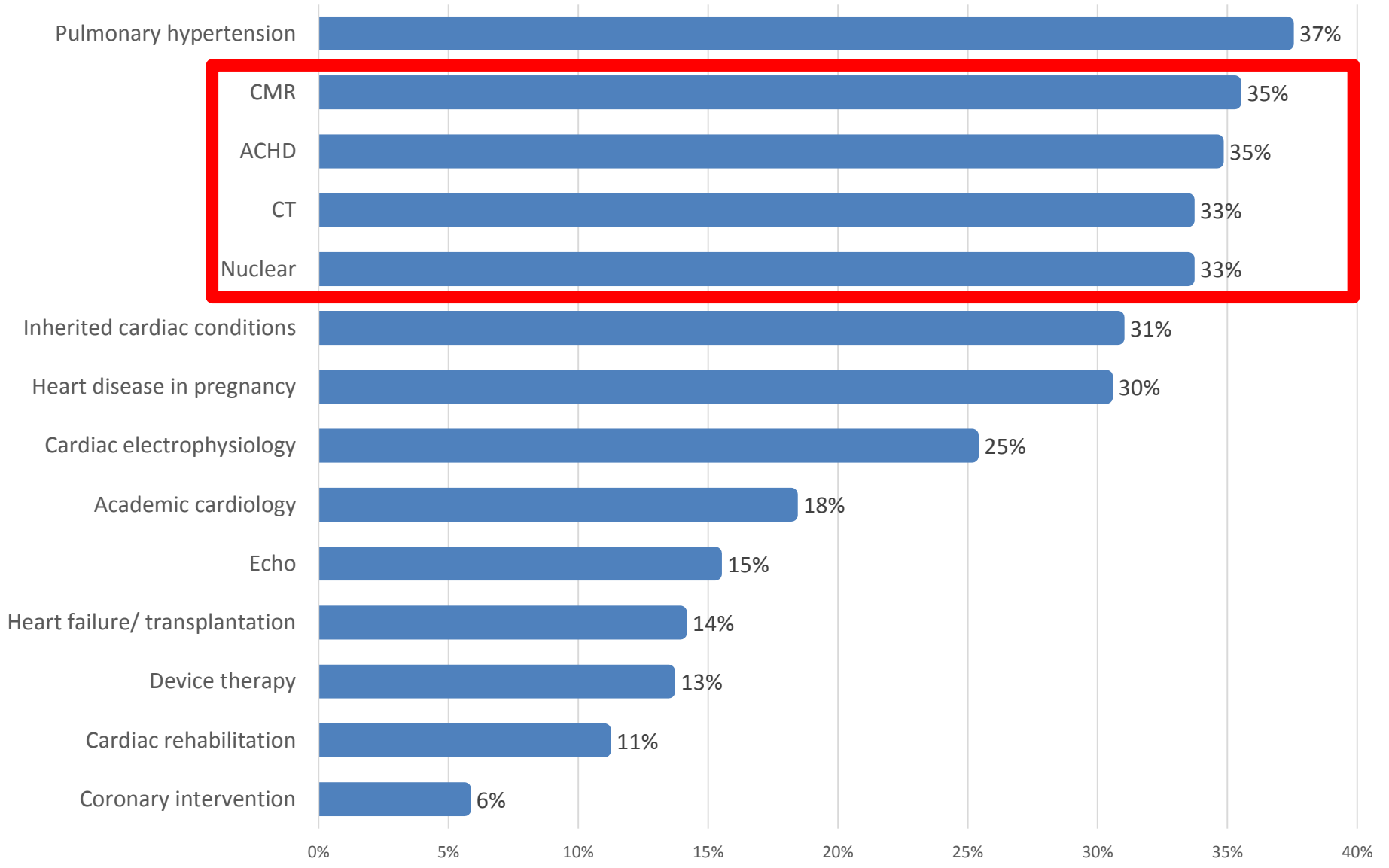
WOULD YOU RECOMMEND YOUR DEANERY TO POTENTIAL CARDIOLOGY TRAINEES AT ST3?



Region	2017	2016	2015	2014
West Midlands	100%	83%	73%	86%
Mersey	93%	92%	93%	100%
Oxford	88%	73%	52%	30%
London - S	86%	76%	89%	81%
Severn	85%	67%	57%	67%
London - NE	81%	58%	94%	94%
Yorks & Humber	78%	78%	79%	82%
Northern Ireland	75%	57%	54%	50%
KSS	73%	50%	63%	88%
London - NW	71%	81%	78%	85%
Northern	70%	72%	83%	94%
Wales	68%	76%	74%	69%
Wessex	67%	83%	64%	76%
East of England	65%	56%	73%	56%
SW Peninsula	64%	53%	75%	70%
Scotland	64%	50%	82%	60%
East Midlands	51%	50%	58%	62%
North Western	37%	46%	48%	57%



WHICH CURRICULUM AREAS DID YOU FIND DIFFICULTY IN ACCESSING AT ST3-5 LEVEL?

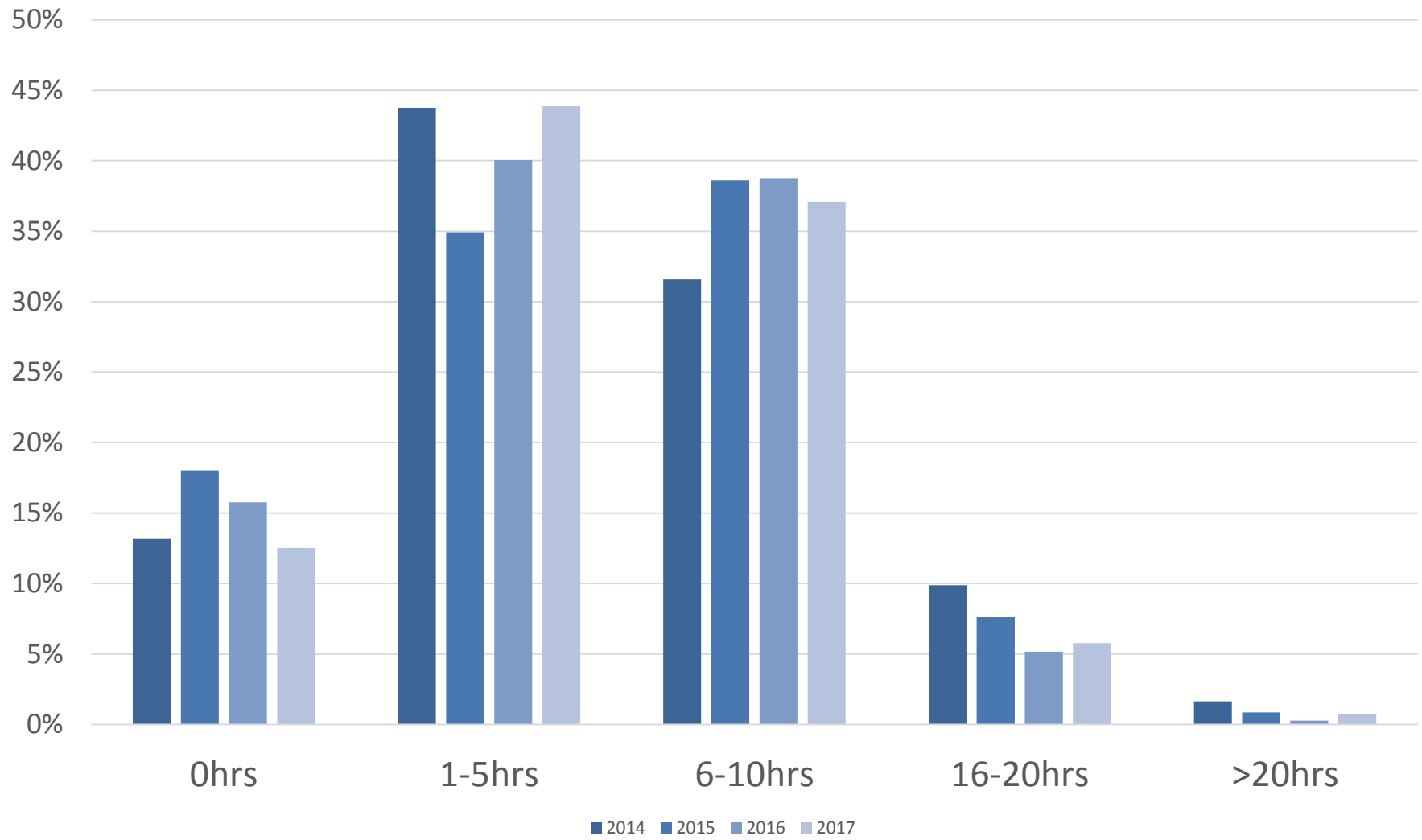


WHICH CURRICULUM AREAS DID YOU FIND DIFFICULTY IN ACCESSING AT ST3-5 LEVEL?

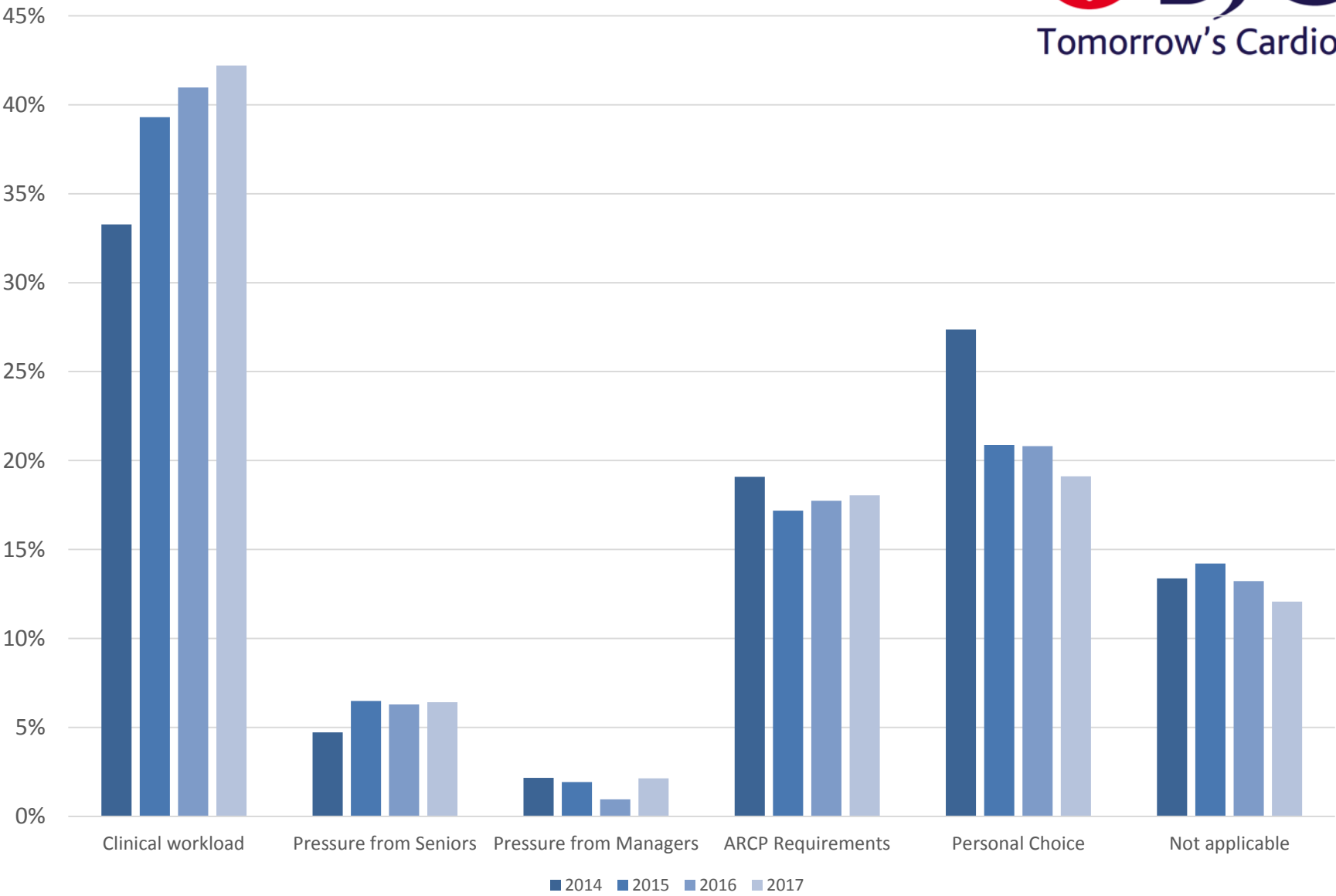


	PCI	CMR	CT	Nuclear	Echo	EP	Heart failure	Devices	ACHD	Academic	ICC	Pregnancy	PH	Rehab	None
West Midlands	4%	15%	27%	23%	4%	23%	15%	15%	31%	23%	42%	23%	35%	8%	23%
Mersey	20%	33%	13%	47%	20%	33%	27%	7%	53%	20%	33%	53%	60%	7%	13%
Oxford	4%	17%	17%	21%	4%	33%	38%	8%	42%	25%	42%	38%	50%	13%	13%
S Thames	4%	14%	25%	32%	18%	18%	4%	14%	18%	7%	18%	25%	29%	18%	25%
Severn	0%	23%	38%	46%	0%	38%	15%	8%	23%	15%	38%	38%	31%	8%	31%
NE Thames	3%	6%	13%	19%	6%	19%	3%	9%	19%	6%	9%	16%	44%	9%	25%
Yorks & Humber	11%	44%	37%	22%	26%	15%	19%	15%	22%	7%	19%	15%	44%	15%	15%
Northern Ireland	8%	50%	58%	42%	67%	25%	33%	25%	58%	17%	25%	67%	25%	0%	8%
KSS	0%	53%	27%	47%	27%	20%	13%	13%	53%	53%	33%	47%	47%	20%	13%
NW Thames	4%	21%	17%	50%	8%	29%	0%	21%	25%	8%	25%	25%	17%	33%	25%
Northern	15%	30%	35%	35%	15%	35%	10%	25%	50%	40%	55%	40%	45%	20%	5%
Wales	3%	65%	48%	16%	6%	13%	3%	6%	26%	6%	26%	13%	19%	0%	6%
Wessex	13%	33%	33%	40%	20%	20%	7%	20%	13%	33%	27%	27%	33%	13%	13%
East of England	0%	58%	45%	52%	19%	29%	23%	16%	52%	23%	42%	32%	39%	6%	6%
Scotland	11%	46%	36%	29%	21%	14%	11%	14%	43%	0%	32%	39%	36%	7%	7%
SW Peninsula	0%	36%	29%	57%	0%	50%	21%	14%	50%	29%	21%	50%	64%	7%	7%
East Midlands	0%	22%	41%	32%	11%	22%	16%	11%	43%	27%	38%	24%	41%	11%	14%
North Western	10%	53%	57%	43%	23%	47%	17%	10%	30%	30%	43%	40%	53%	13%	10%

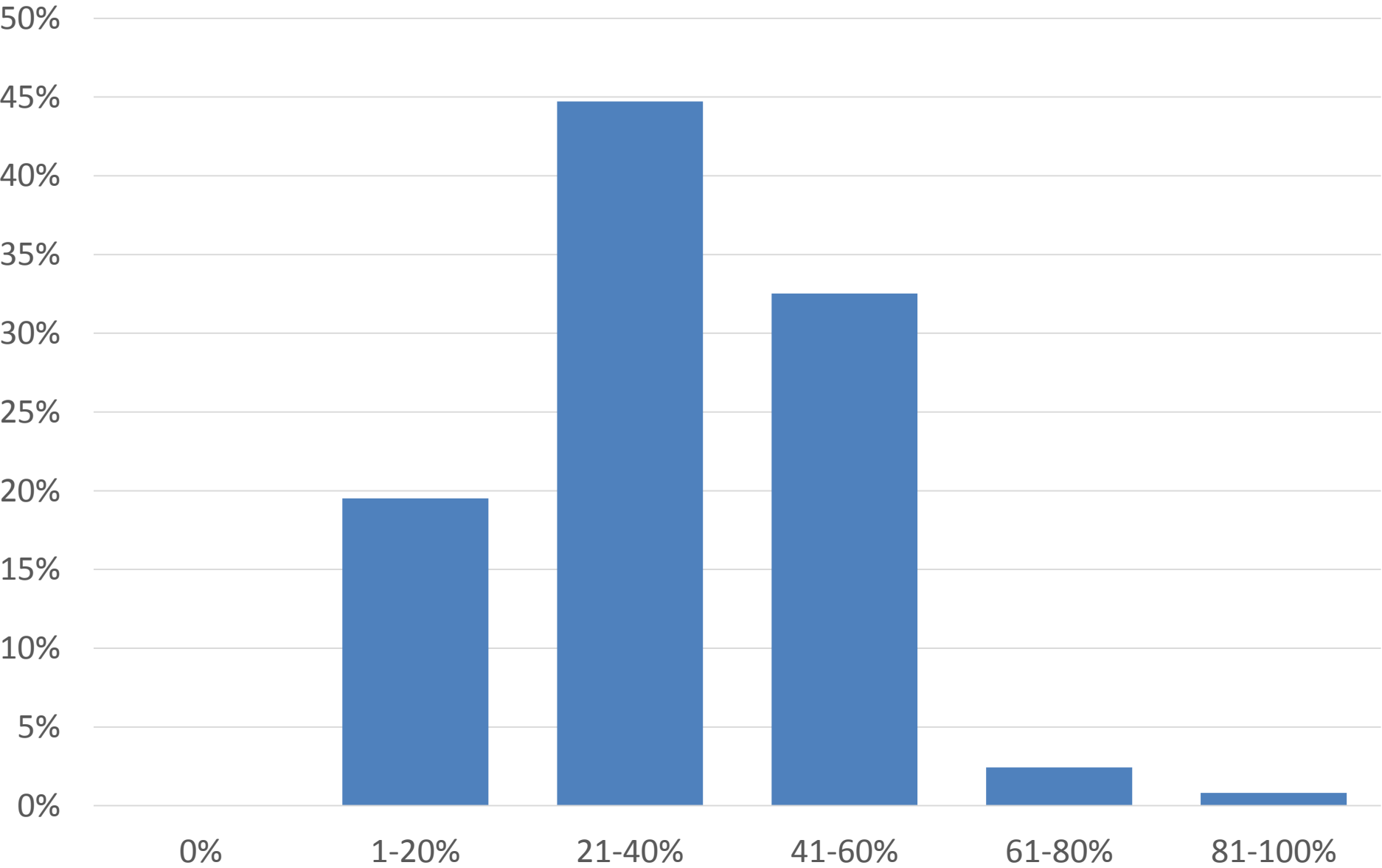
HOW MANY EXTRA HOURS DO YOU WORK EACH WEEK?



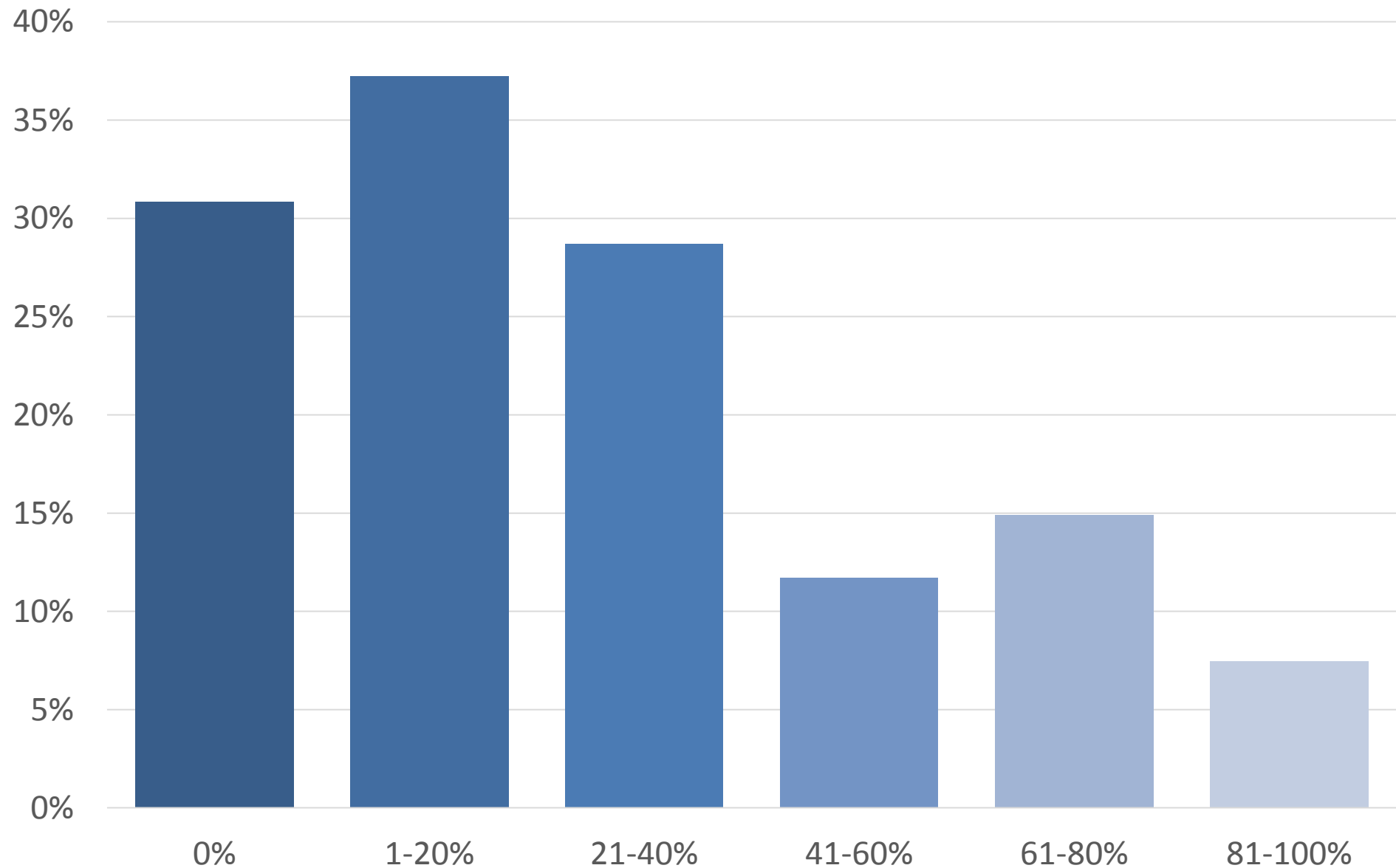
WHY DO YOU WORK EXTRA HOURS?



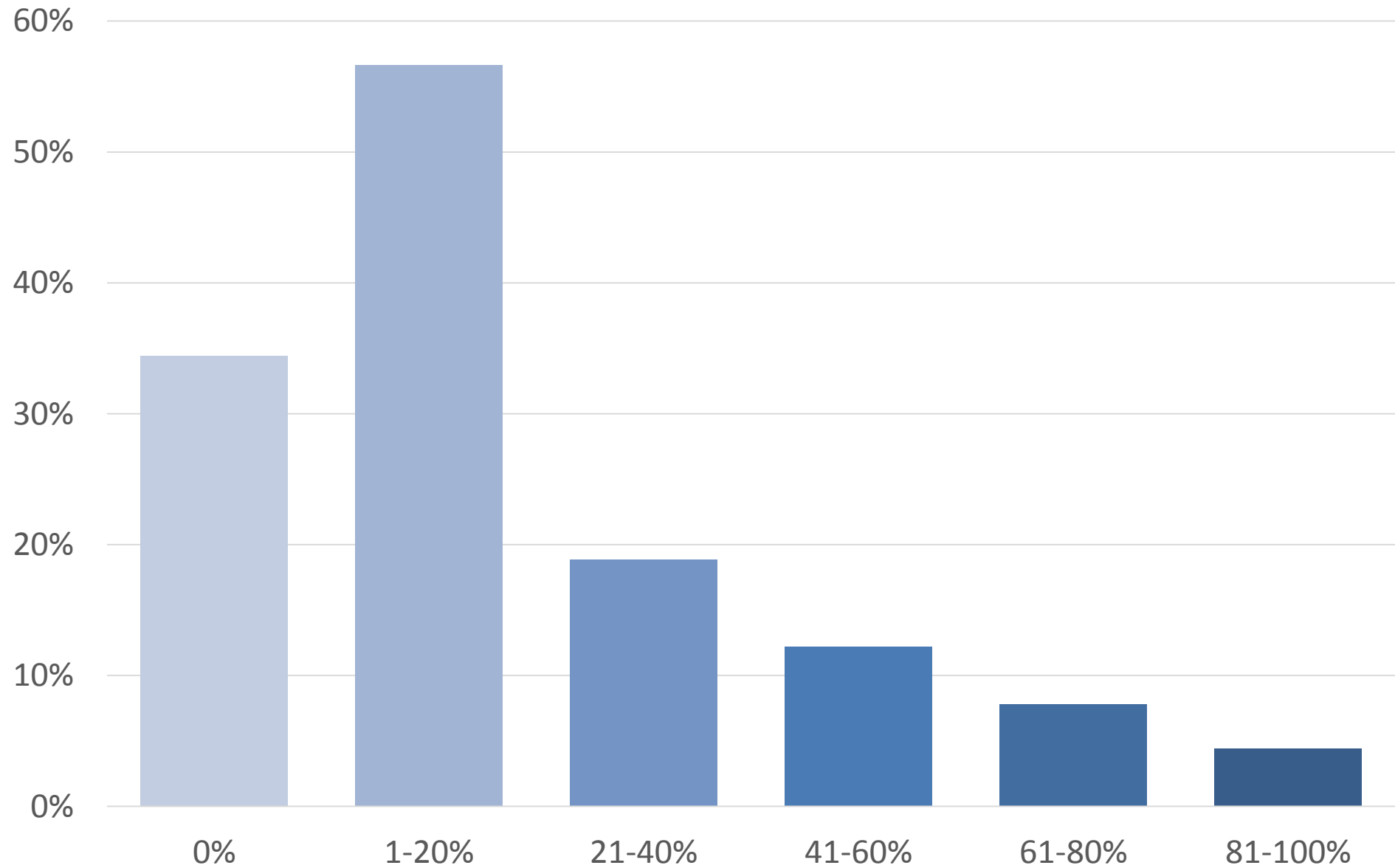
ACUTE GENERAL MEDICINE: PROPORTION OF TIME



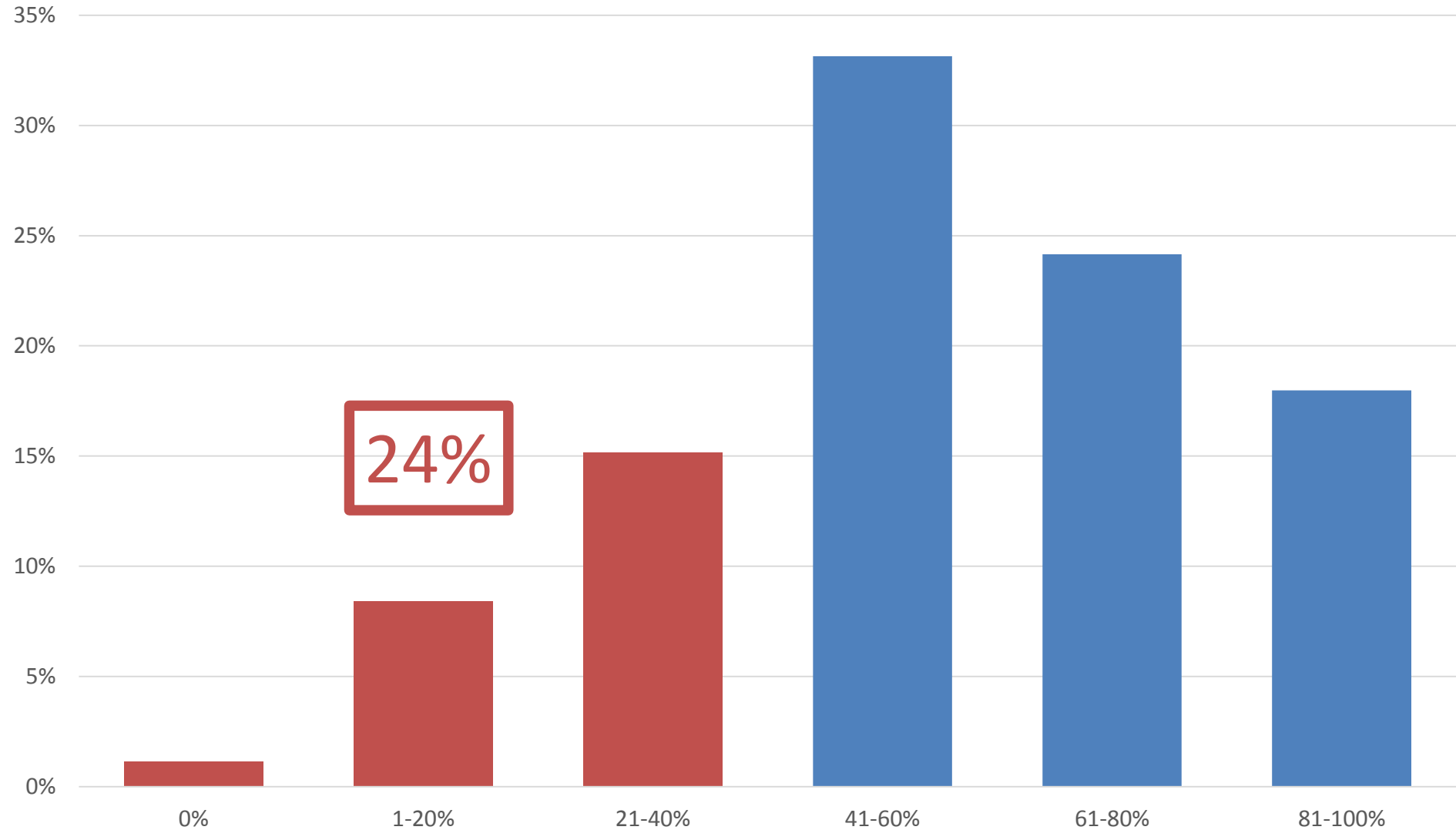
ACUTE GENERAL MEDICINE: TIME UNSUPERVISED



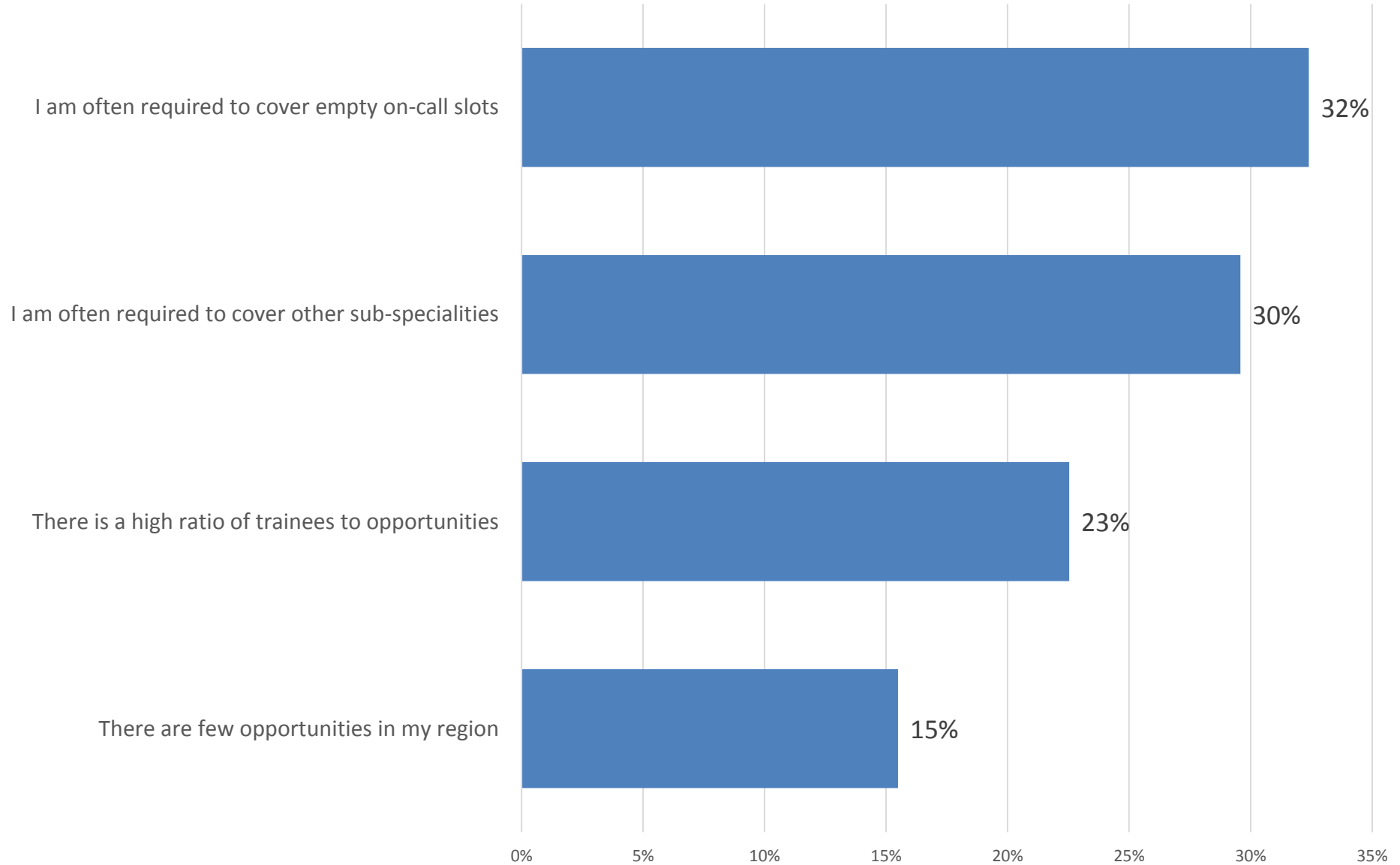
ACUTE GENERAL MEDICINE: CURRICULUM BASED TRAINING



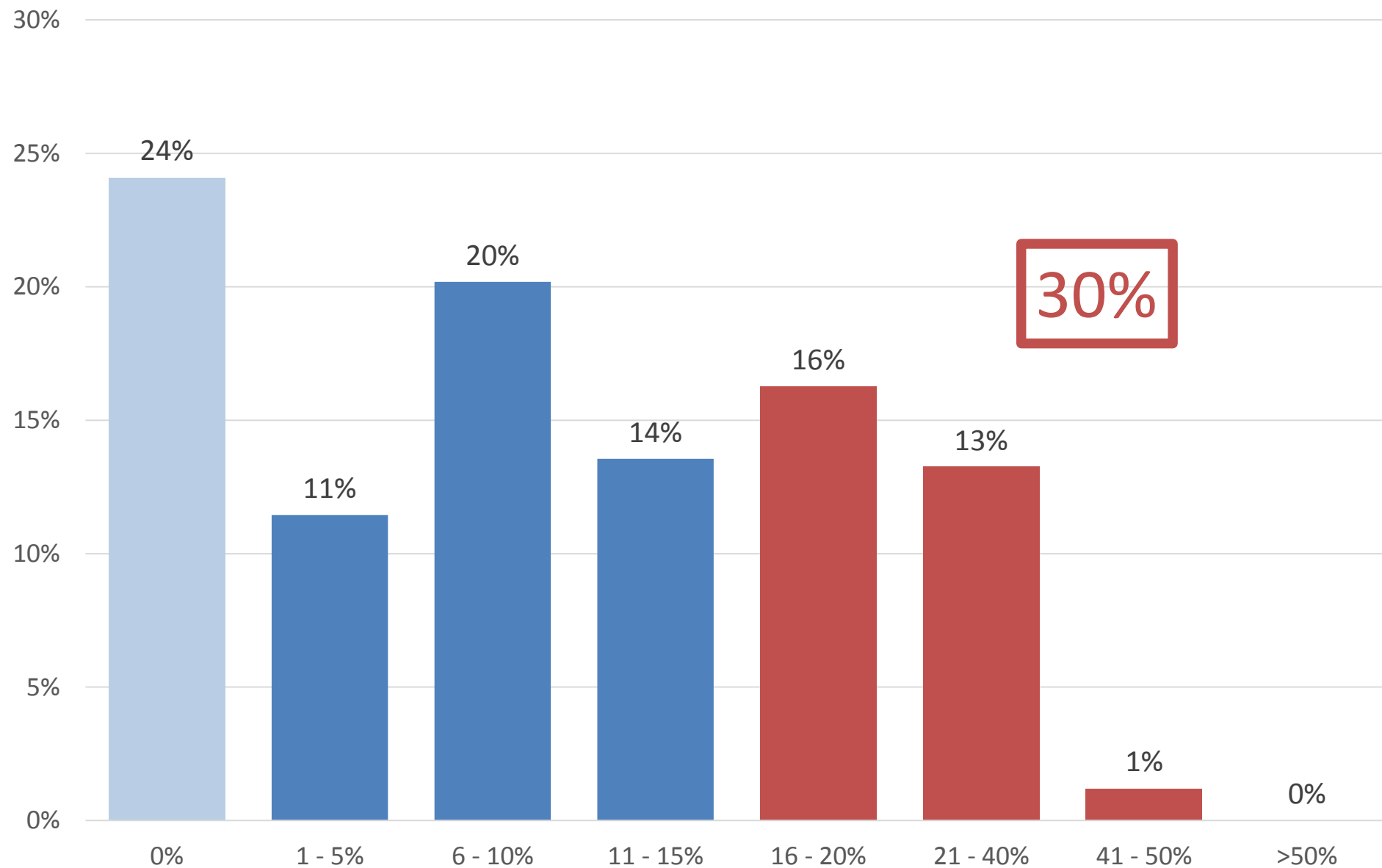
TRAINING IN ADVANCED MODULES: PROPORTION OF TIME



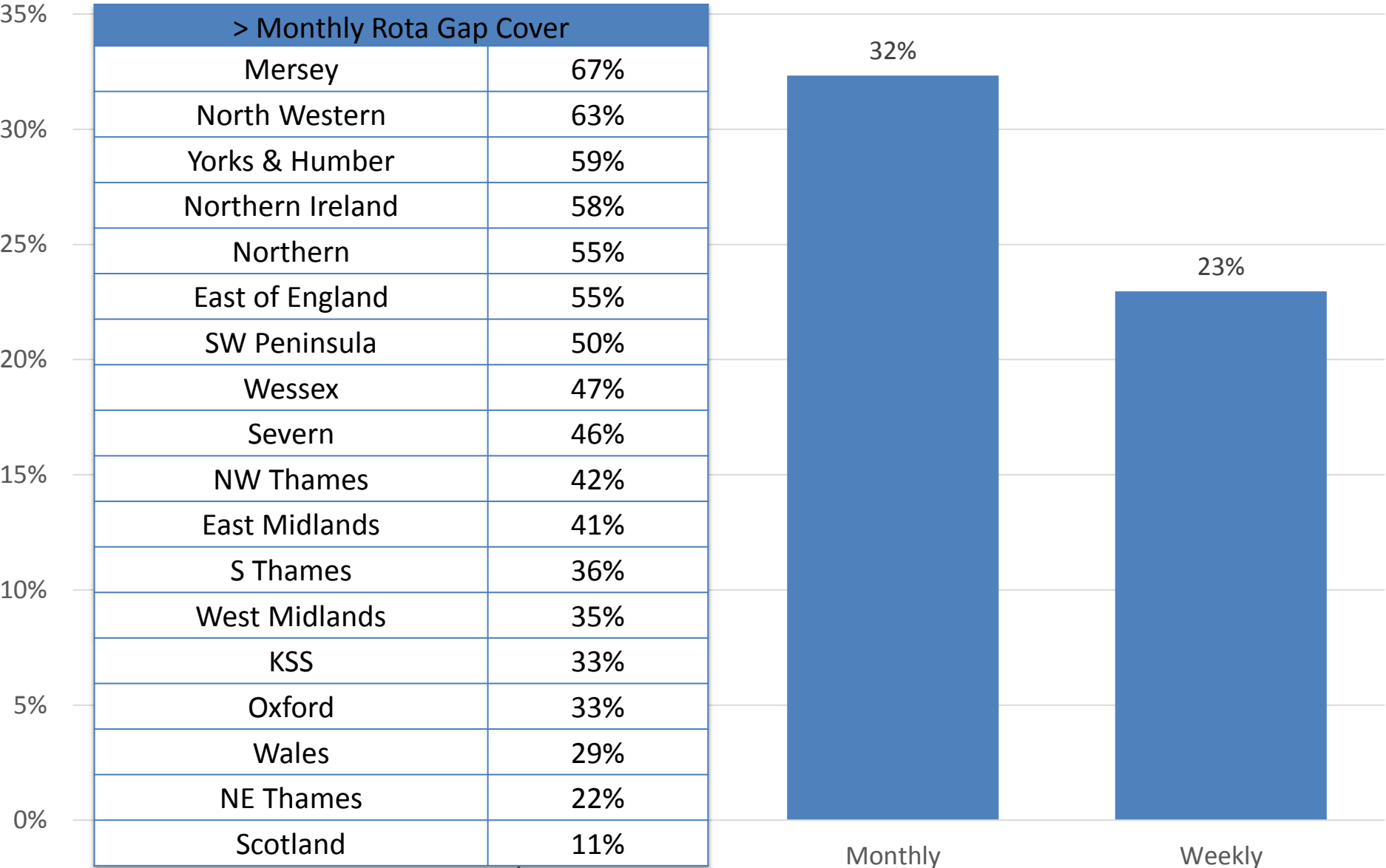
TRAINING IN ADVANCED MODULES: WHY <40%?



WHAT PROPORTION OF YOUR ROTA IS UNFILLED?

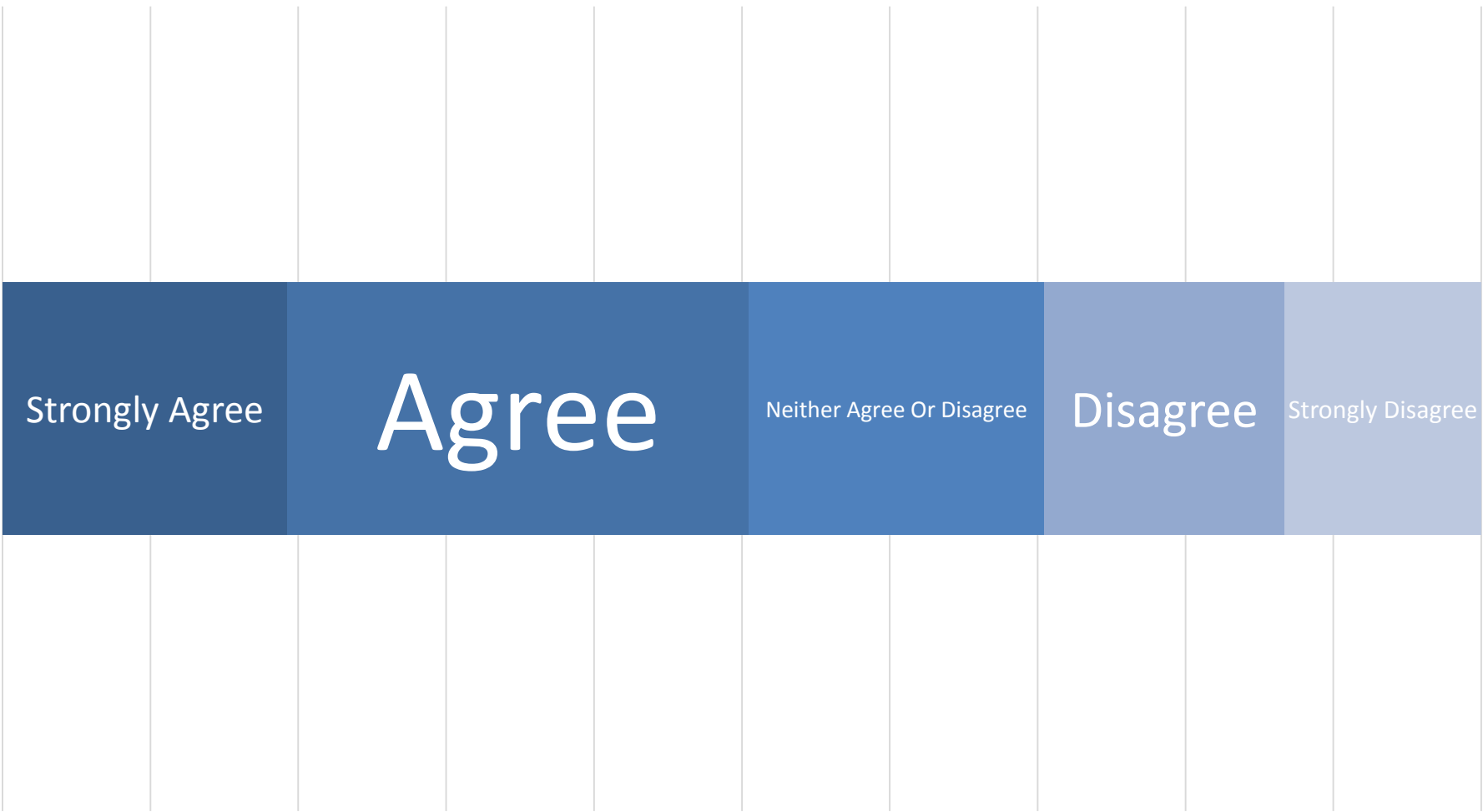


HOW OFTEN ARE YOU ASKED TO FILL ROTA GAPS?

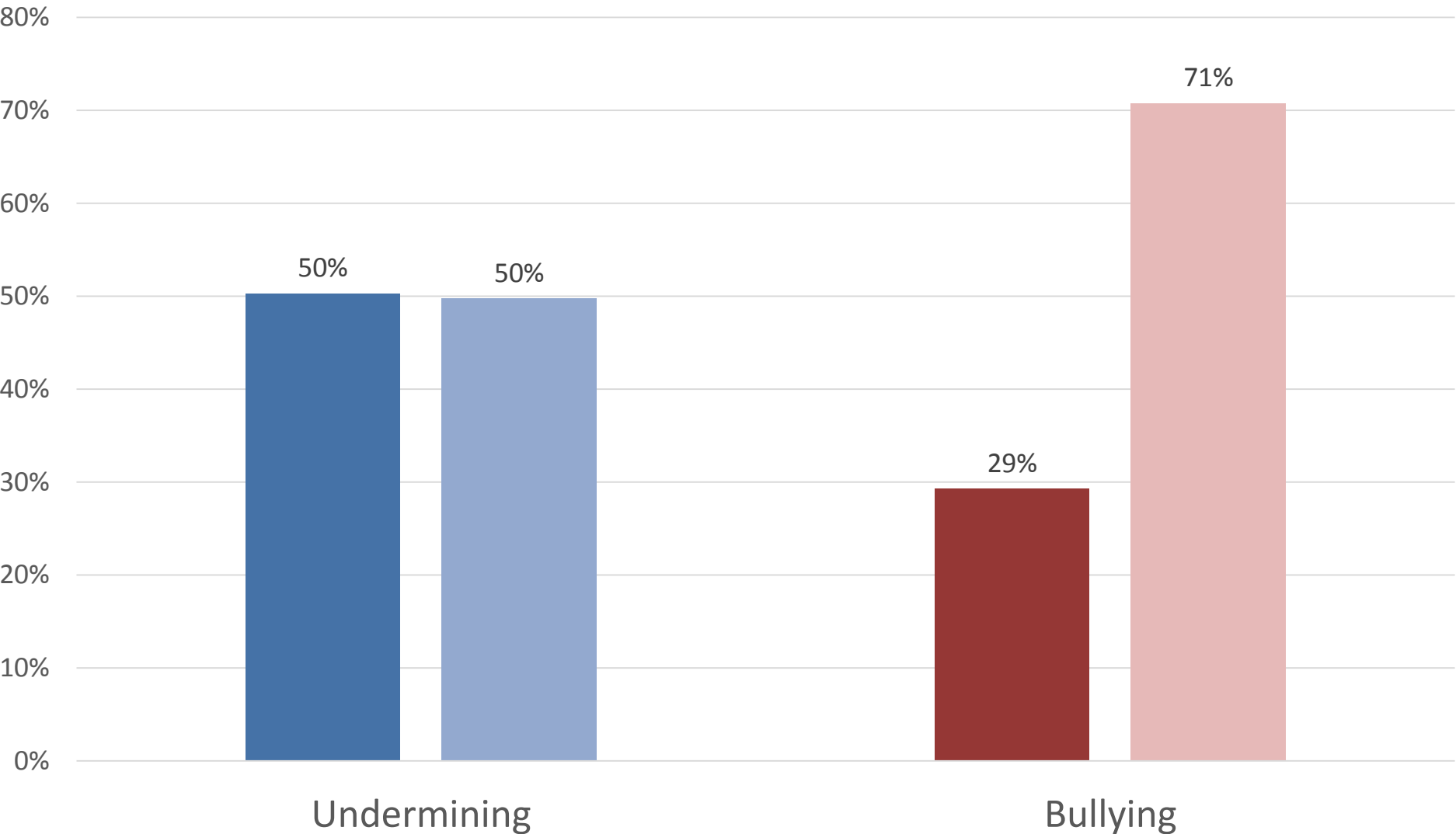


> Monthly Rota Gap Cover	
Mersey	67%
North Western	63%
Yorks & Humber	59%
Northern Ireland	58%
Northern	55%
East of England	55%
SW Peninsula	50%
Wessex	47%
Severn	46%
NW Thames	42%
East Midlands	41%
S Thames	36%
West Midlands	35%
KSS	33%
Oxford	33%
Wales	29%
NE Thames	22%
Scotland	11%

UNFILLED ROTA GAPS HAVE REDUCED MY ACCESS TO TRAINING



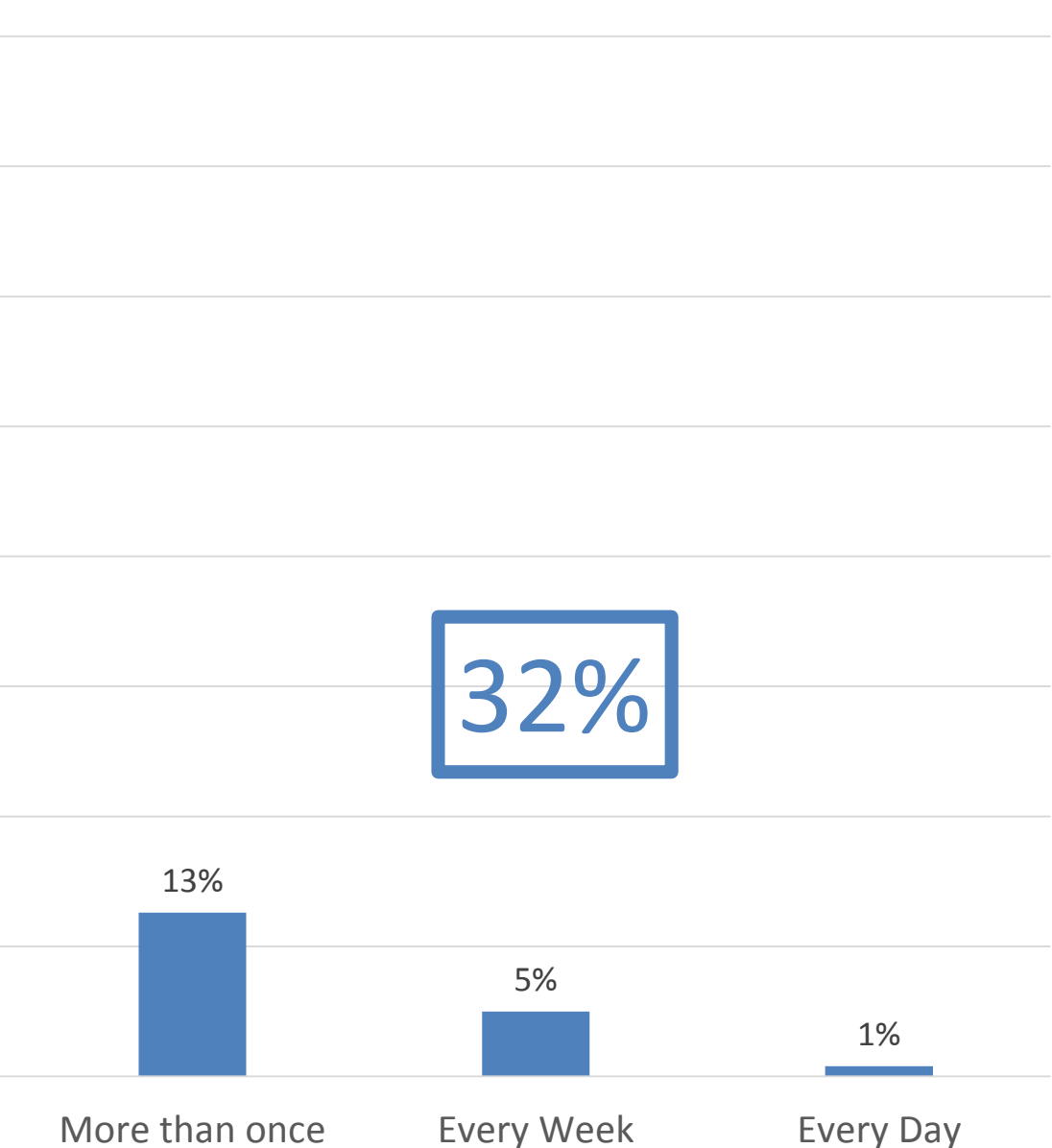
HAVE YOU EVER WITNESSED BULLYING OR UNDERMINING BEHAVIOUR IN A CARDIOLOGY POST?



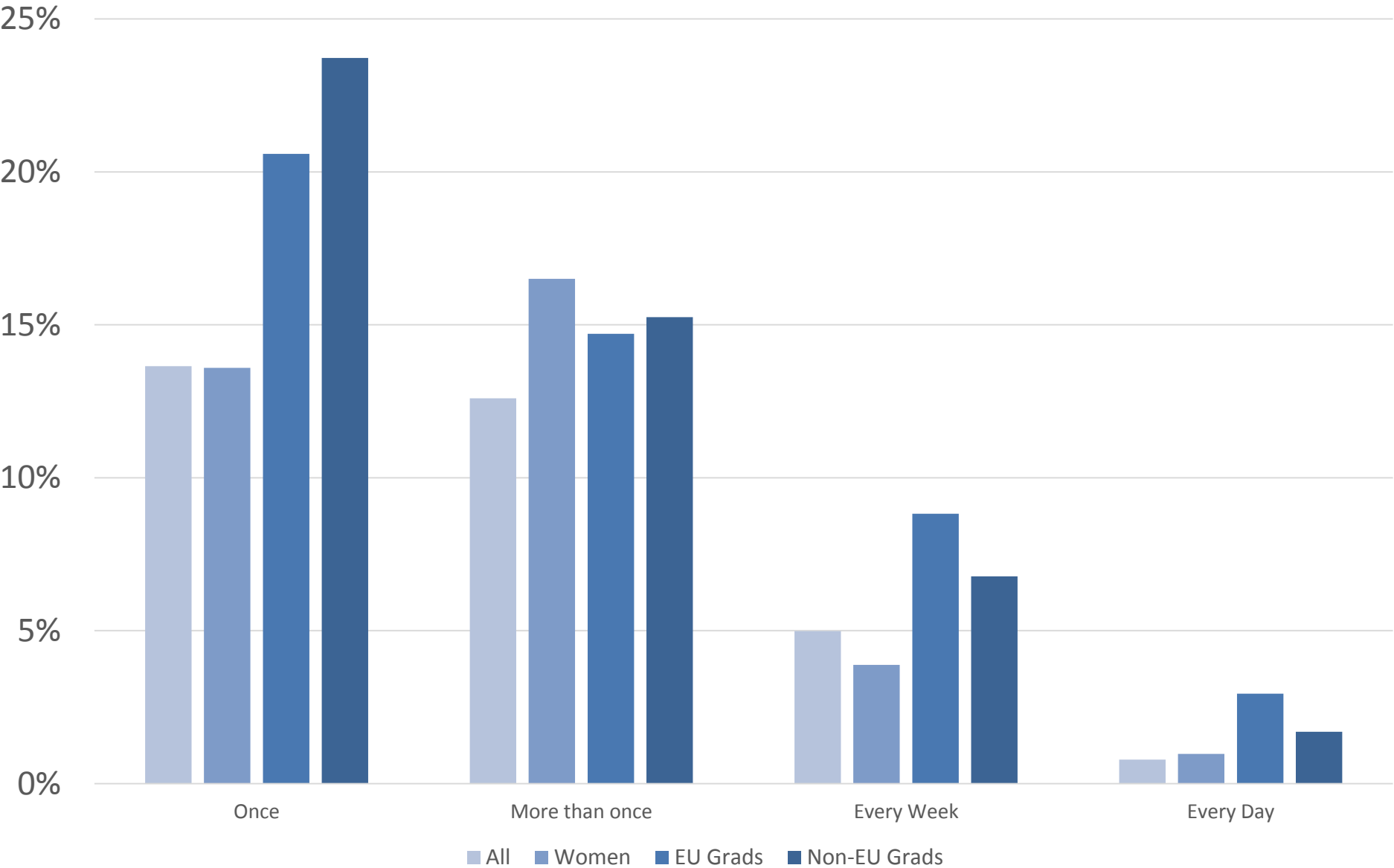
HOW OFTEN HAVE YOU BEEN UNDERMINED IN THE PAST 4 WEEKS?



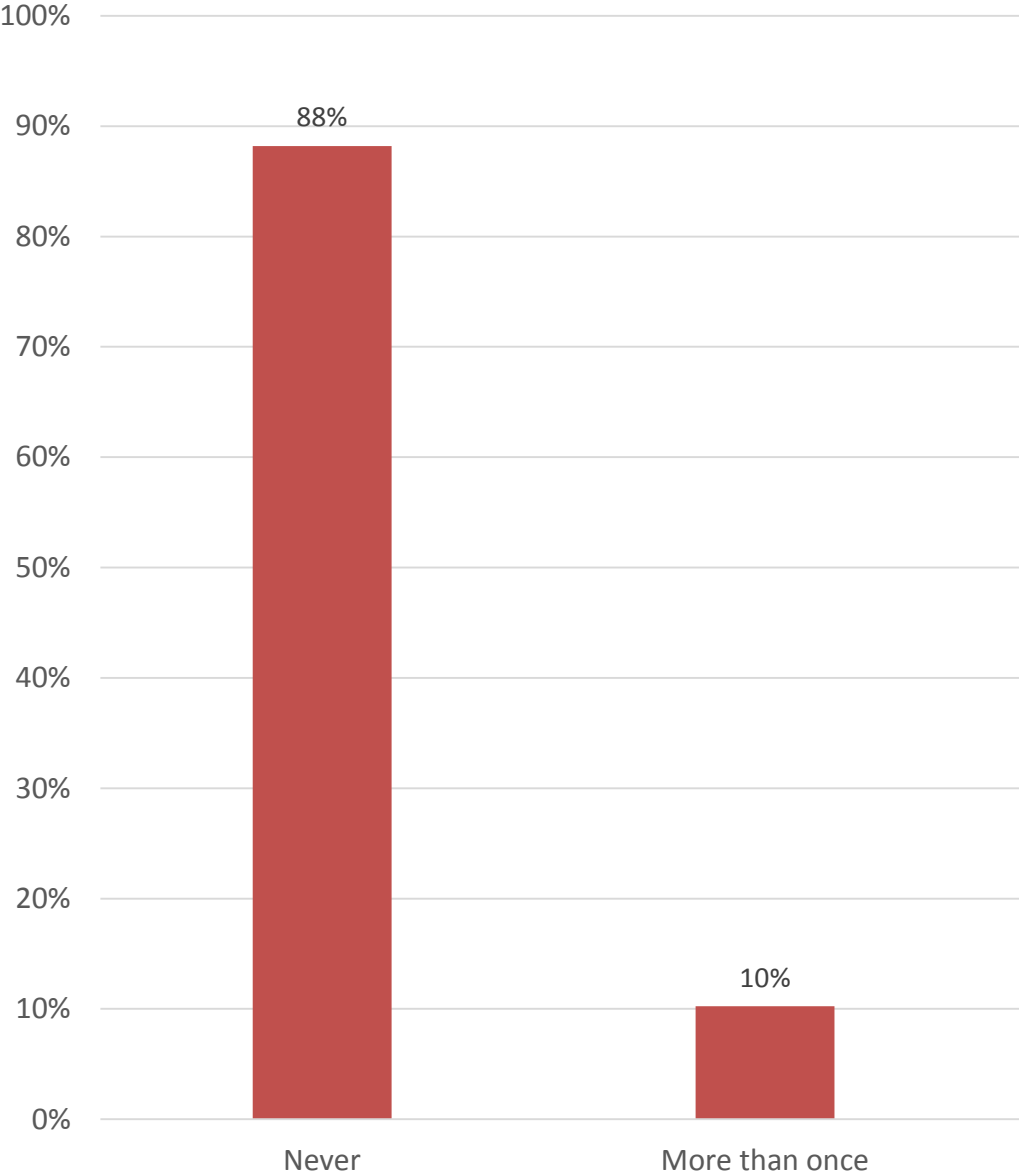
% Reporting Undermining	
East Midlands	83%
East of England	47%
Northern Ireland	29%
Wales	27%
Severn	25%
London - NE Thames	24%
Oxford	23%
Wessex	22%
Scotland	19%
Yorkshire and Humber	18%
London - NW Thames	17%
South West Peninsula	13%
North Western	13%
West Midlands	11%
Mersey	10%
Northern	8%
London - S Thames	0%
Kent, Surrey and Sussex	0%



HOW OFTEN HAVE YOU BEEN UNDERMINED IN THE PAST 4 WEEKS?

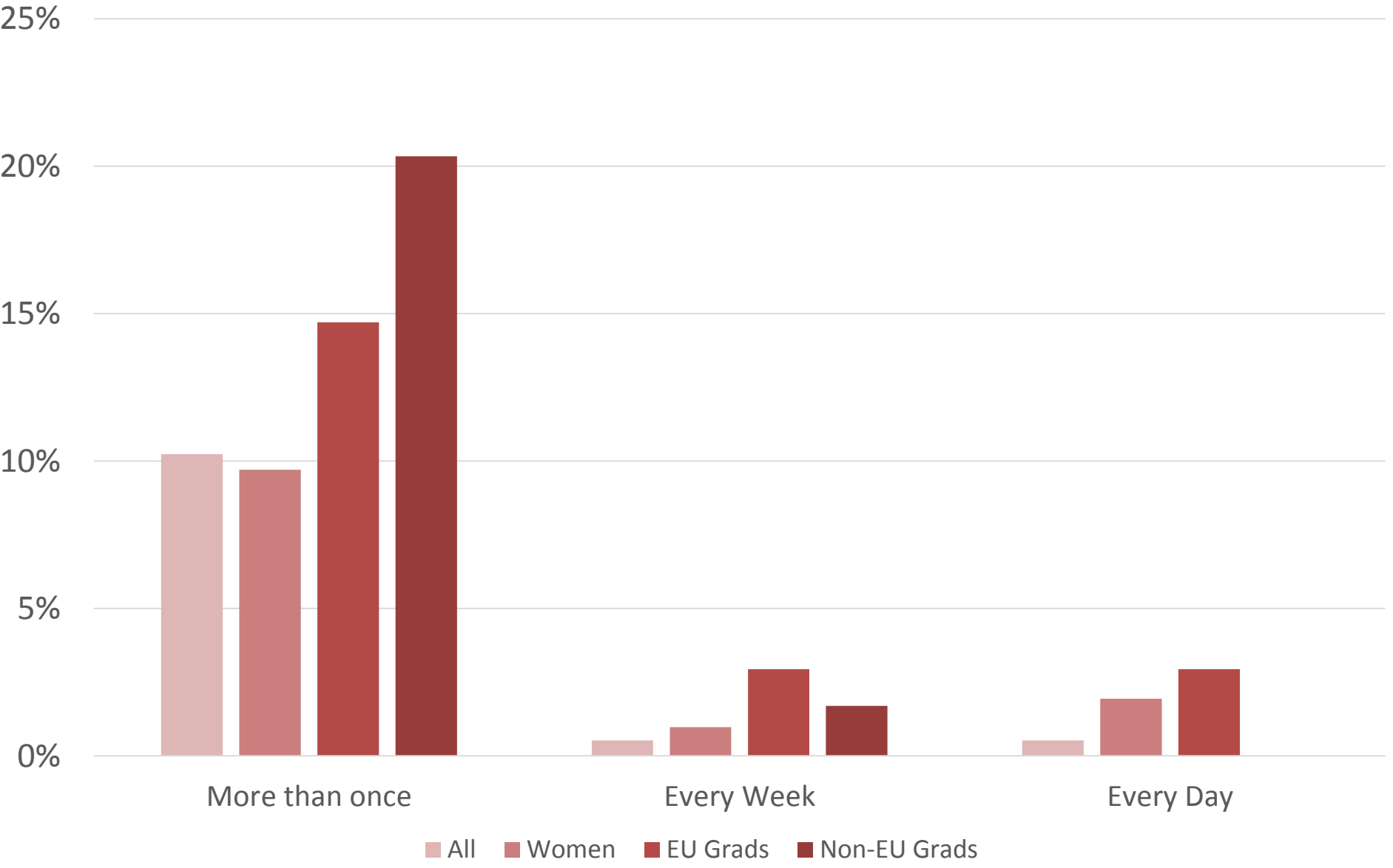


HOW OFTEN HAVE YOU BEEN BULLIED IN THE PAST 4 WEEKS?



% Reporting Bullying	
Northern	20%
Wessex	20%
East Midlands	16%
South West Peninsula	14%
Wales	13%
East of England	13%
London - NW Thames	13%
West Midlands	12%
London - S Thames	11%
Scotland	11%
North Western	10%
Oxford	8%
Severn	8%
Mersey	7%
London - NE Thames	3%
Yorkshire and Humber	0%
Northern Ireland	0%
Kent, Surrey and Sussex	0%

HOW OFTEN HAVE YOU BEEN BULLIED IN THE PAST 4 WEEKS?



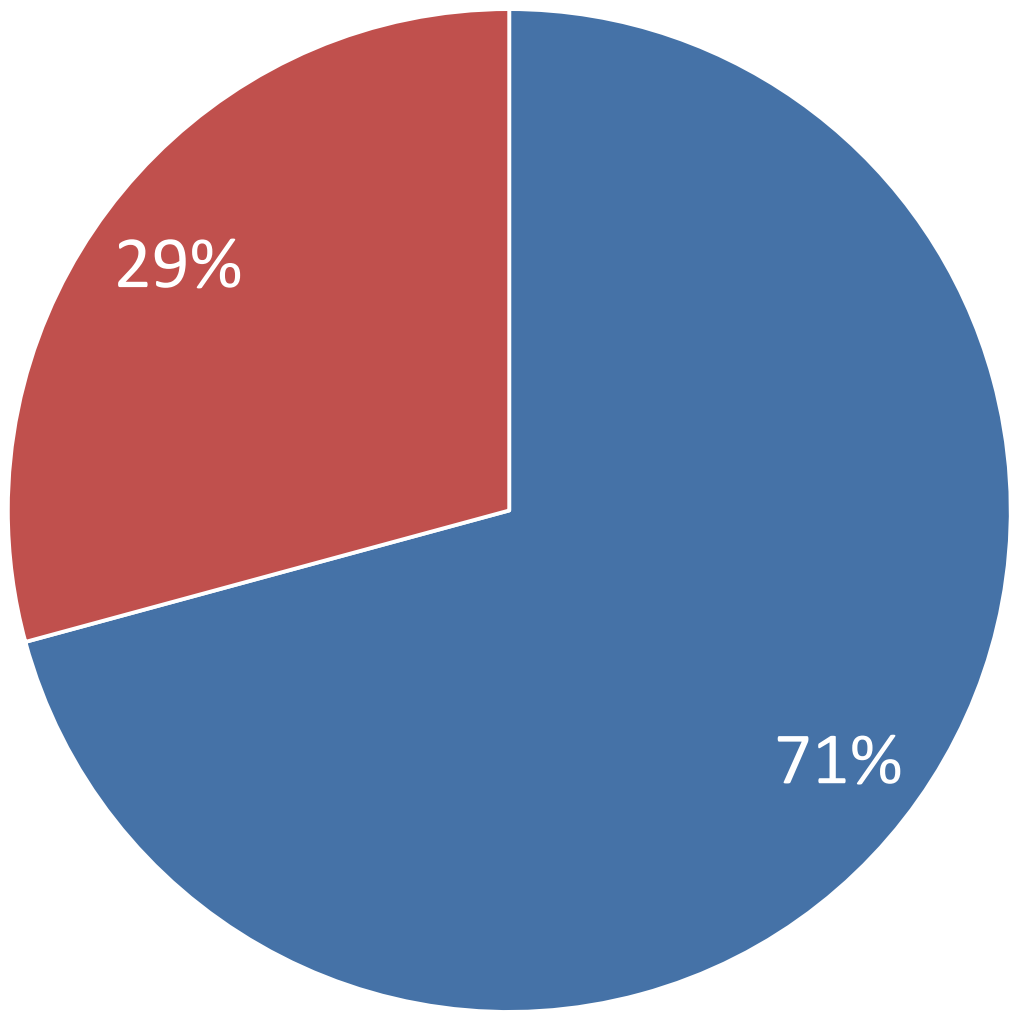
CORE ECHO TRAINING



SUMMARY OF NEW ECHO CURRICULUM

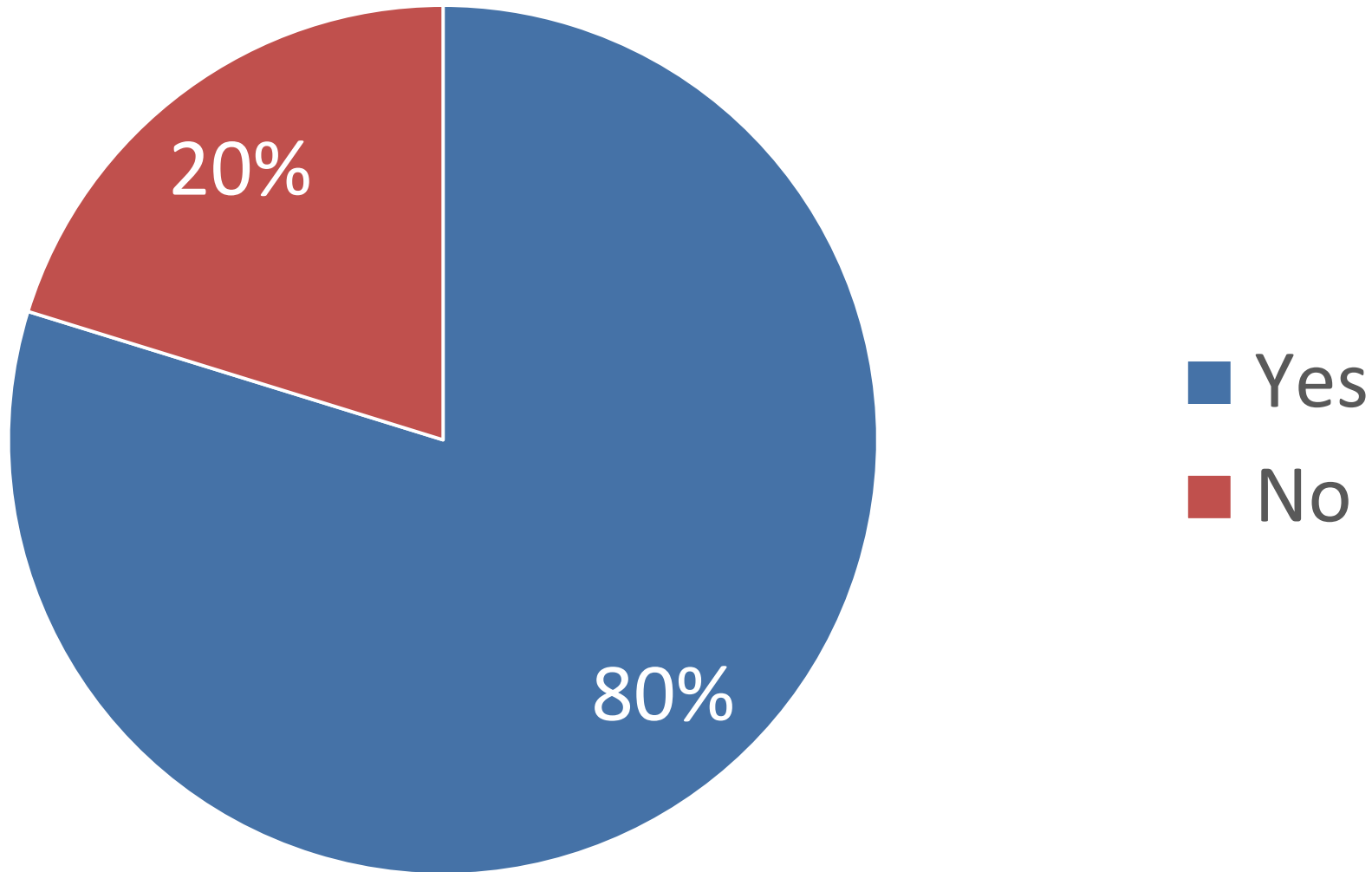
- Applies to Core Trainees from November 2016
 - e-learning module
 - Log-book of cases (150-200)
 - 5 video cases

ARE YOU AWARE OF THE 2016 CHANGES TO THE ECHO CURRICULUM?

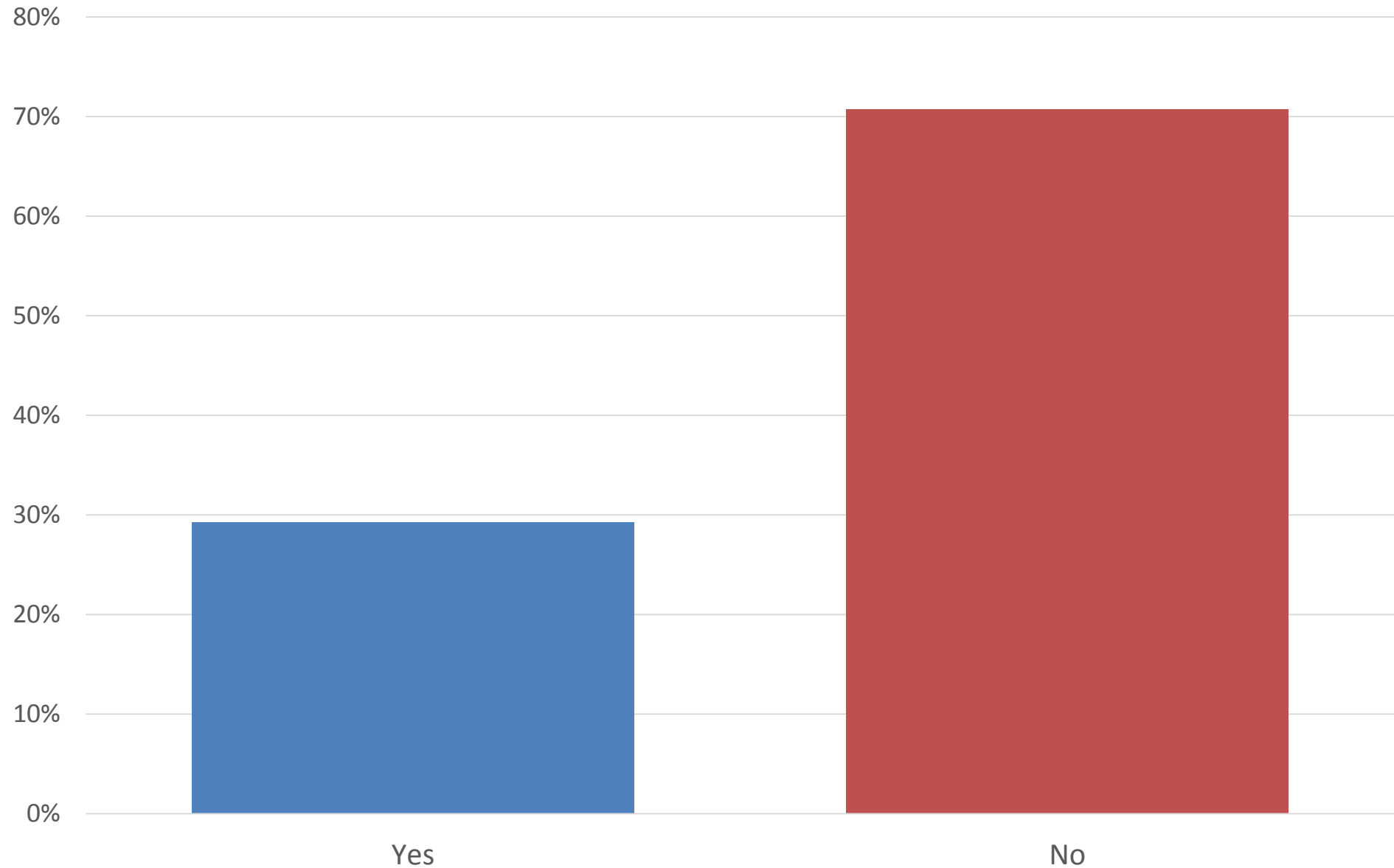


- Yes
- No

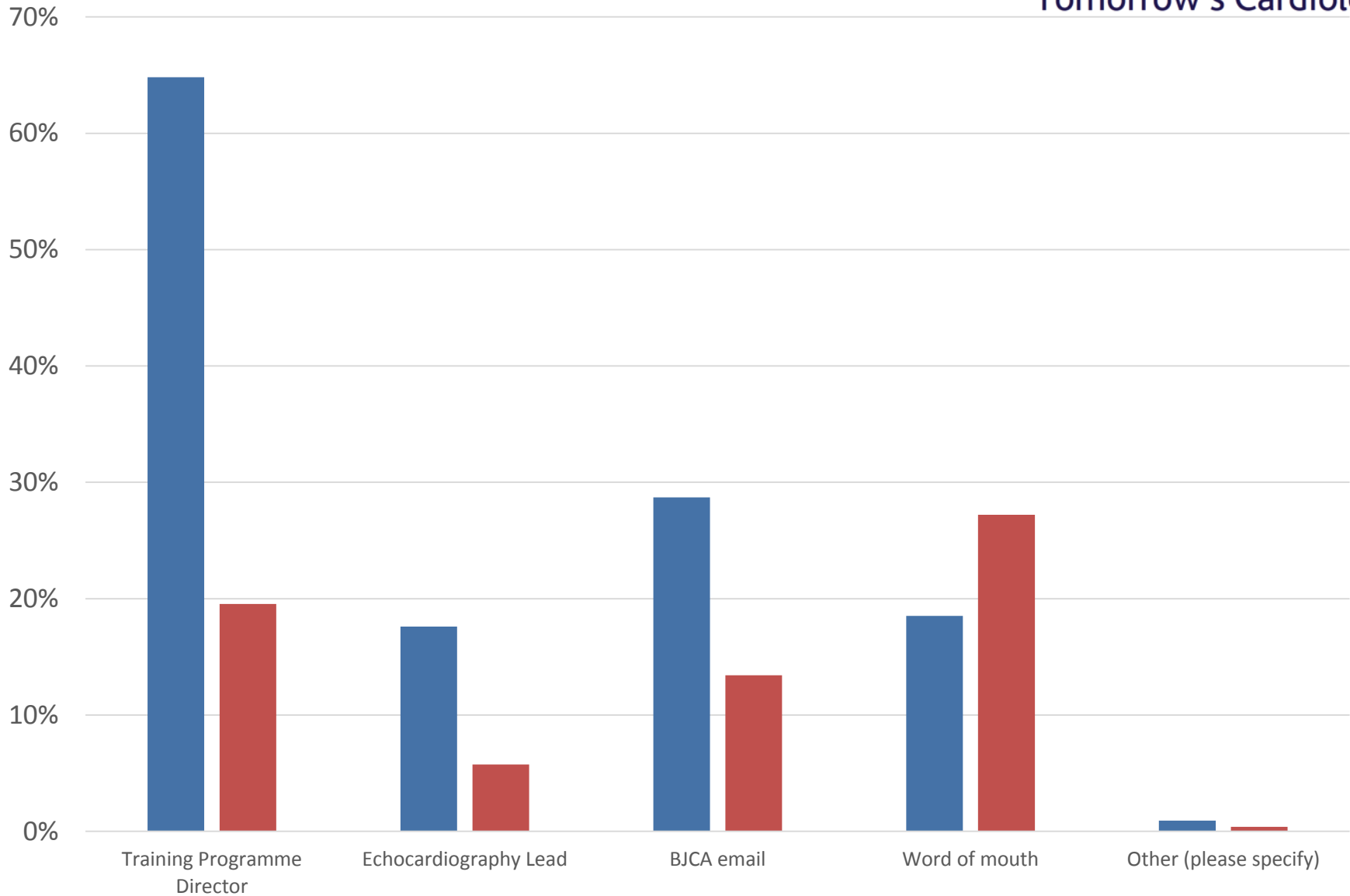
ARE YOU AWARE OF THE 2016 CHANGES TO THE ECHO CURRICULUM? ST5



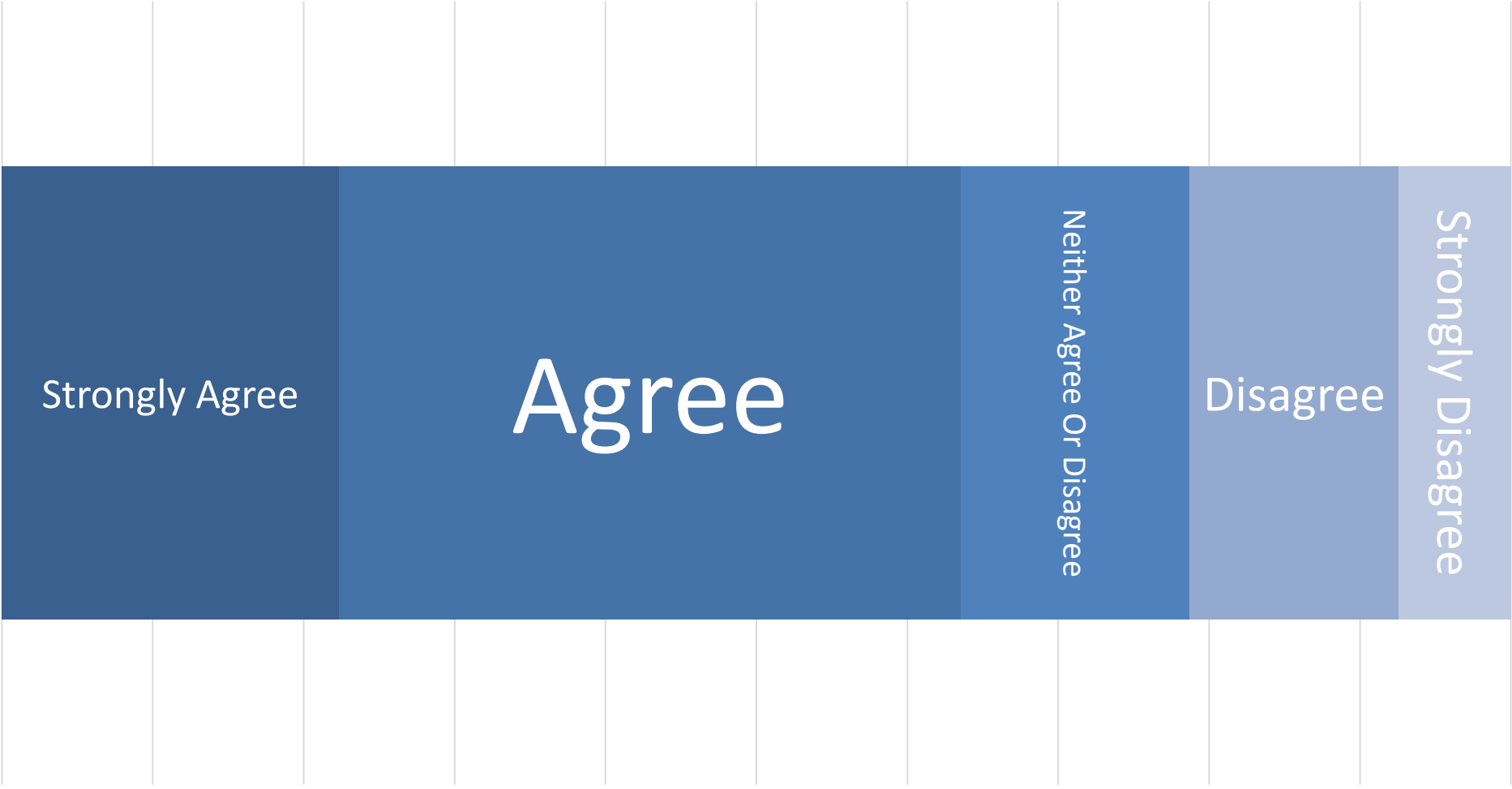
WERE YOU INFORMED OF THE CHANGES BEFOREHAND?



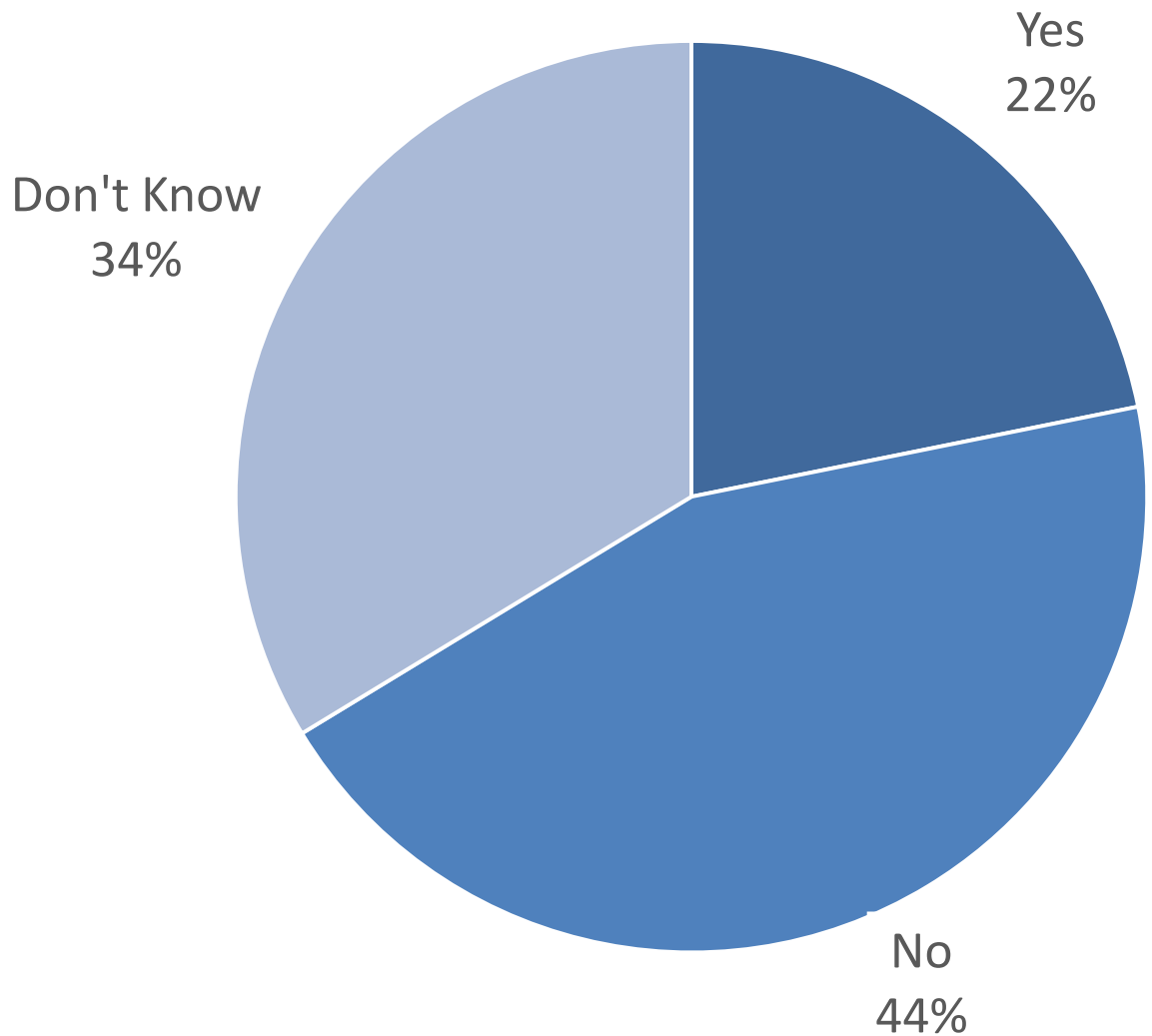
HOW WERE YOU INFORMED?



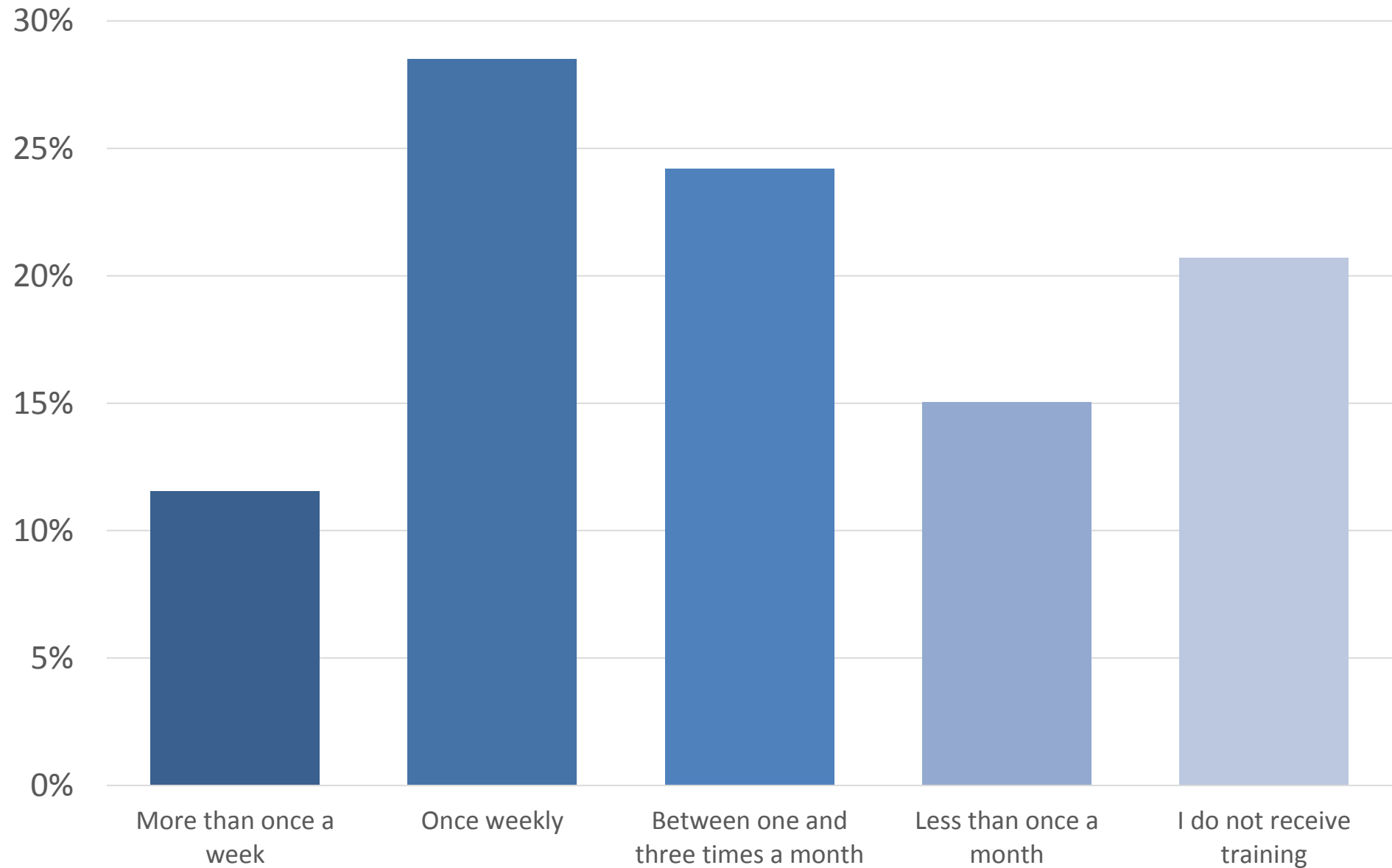
“I AM ABLE TO ACHIEVE MY CORE CURRICULUM REQUIREMENTS IN TTE”



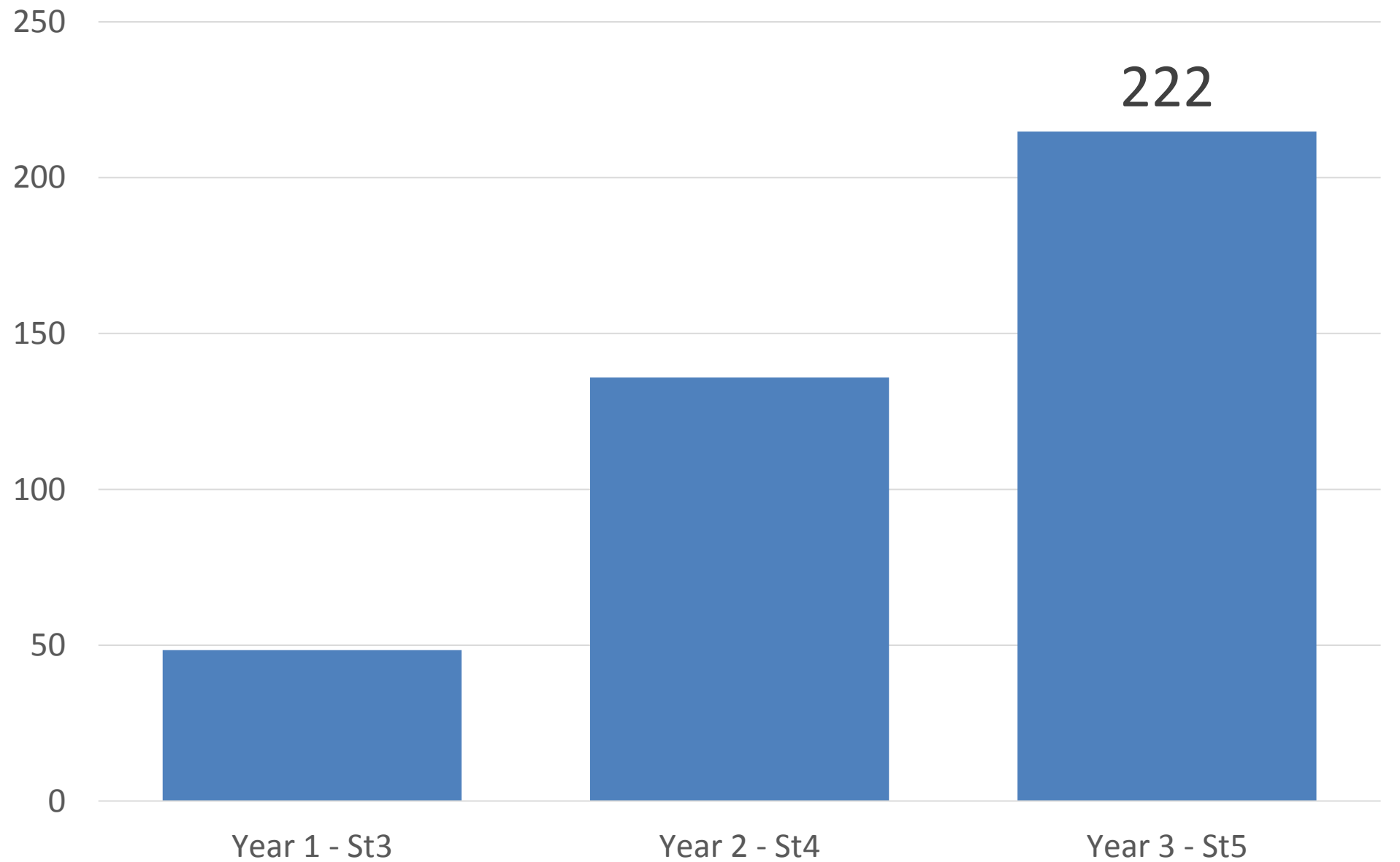
DO YOU THINK THE NEW REQUIREMENTS FOR ECHOCARDIOGRAPHY ARE ACHIEVABLE FOR THE MAJORITY OF CARDIOLOGY TRAINEES?



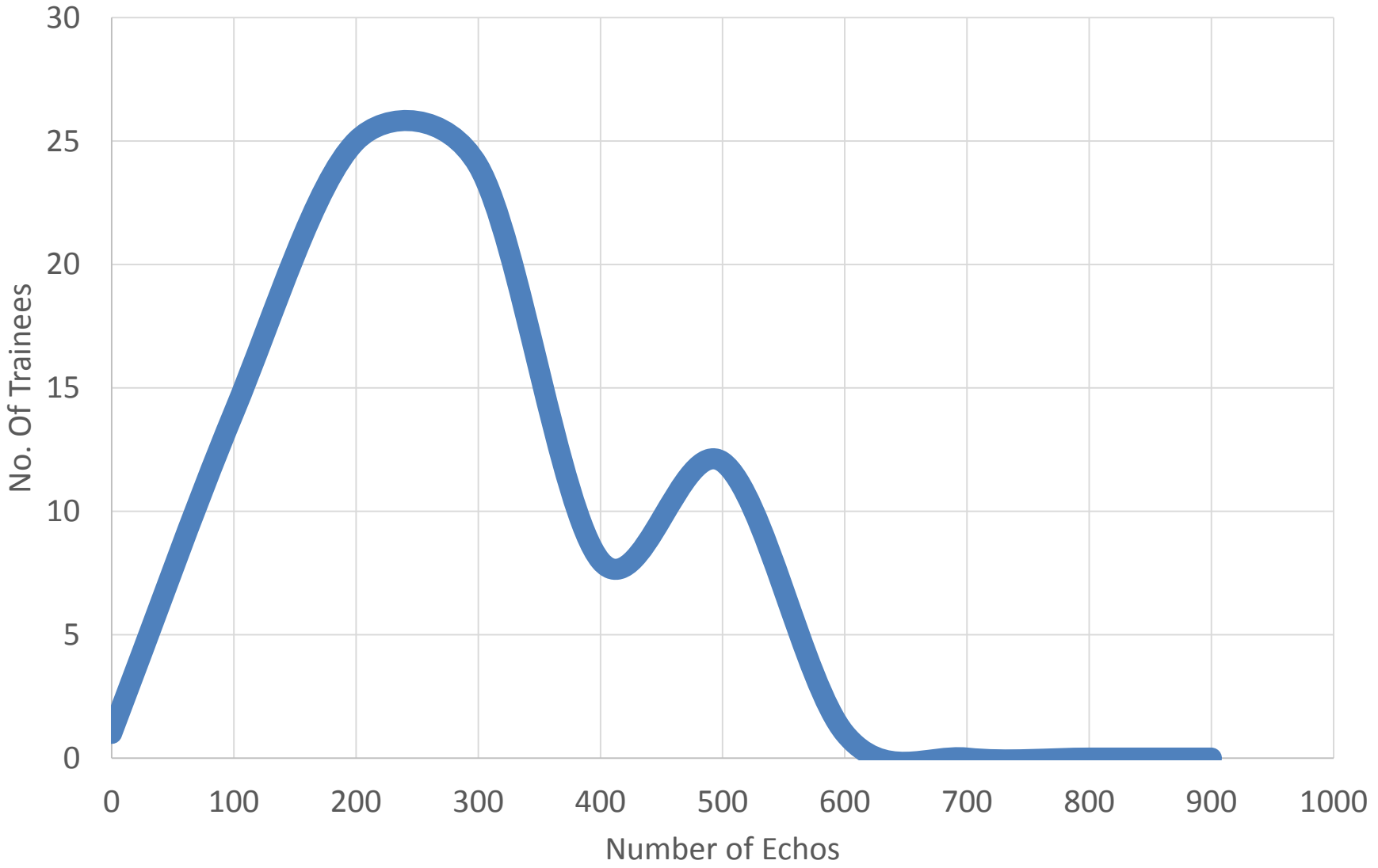
HOW OFTEN DO YOU RECEIVE ECHO TRAINING?



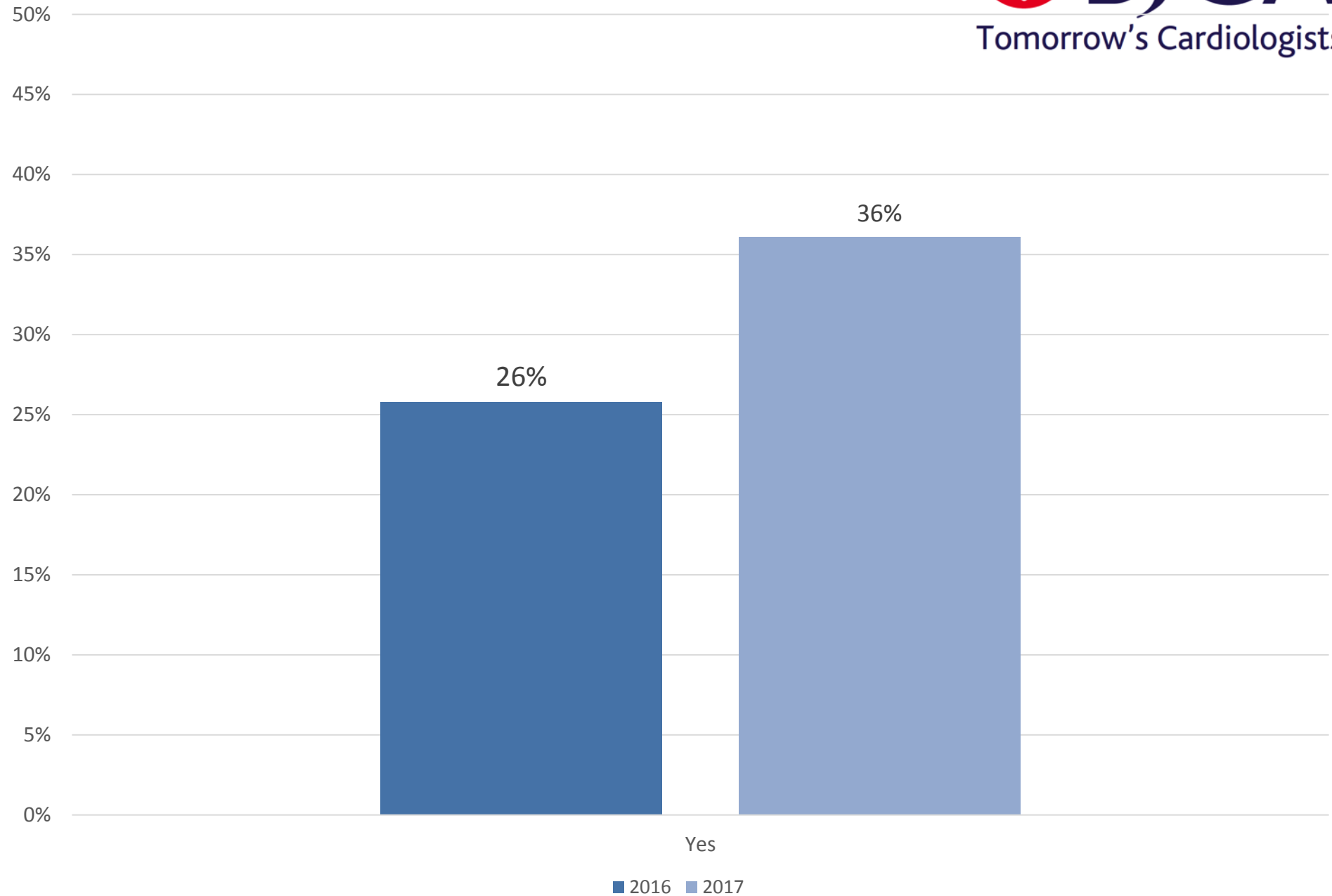
AVERAGE ECHO NUMBERS: CORE TRAINEES



AVERAGE ECHO NUMBERS: ST5s



ARE YOUR ECHO LISTS BLEEP-FREE?



SUMMARY

- Training Experience
 - Huge regional variation persists
 - Service provision imposing further on training
 - Rota gaps are affecting access to training
 - Undermining and bullying must be explored
- Echo
 - New curriculum appears achievable (as long as you know about it!)
 - Access to training is improving



ACKNOWLEDGMENTS

Azeem Ahmad

BCS

Carolyn Hargreaves

BCS

Prof. Russell Smith

SAC

Dr. Alison Calver

SAC

BJCA Deanery representatives

Twitter: @theBJCA

Slides (and more data) on BJCA.co

